

TEAC



SERVICE MANUAL

AD-600



Compact Disc Multi Player/Reverse Cassette Deck

CONTENTS

1 SAFETY INFORMATION	2
2 SPECIFICATIONS	3
3 ADJUSTMENTS AND CHECKS	4
4 EXPLODED VIEWS AND PARTS LIST	10
5 PC BOARDS AND PARTS LIST	16
6 INCLUDED ACCESSORIES	21

目次

1 SAFETY INFORMATION	2
2 仕様	3
3 調整と確認	4
4 分解図とパーツリスト	10
5 基板図とパーツリスト	16
6 付属品	21

NOTES

- PC boards shown are viewed from parts side.
- Parts marked with * require longer delivery time.
- The parts with no reference number or no parts number in the exploded views are not supplied.
- As regards the resistors and capacitors, refer to the circuit diagrams contained in this manual.
- △ Parts marked with this sign are safety critical components. They must be replaced with identical components - refer to the appropriate parts list and ensure exact replacement.
- Parts of [] mark can be used only with the version designated.
[J]:JAPAN [US]:U.S.A. [C]:CANADA [GE]:GENERAL EXPORT
[K]:KOREA [E]:EUROPE [UK]:U.K. [A]:AUSTRALIA

注 意

- プリント基板図は部品面を示しています。
- *印の部品は納期が若干かかります。
あらかじめご了承ください。
- 分解図に部番のない部品および品番のない部品は供給できません。
- 標準の抵抗、コンデンサーは省略してあります。
回路図を参照してください。
- △印は安全重要部品です。
交換する時は必ず指定の部品を使用してください。
- 仕向先
[J]:JAPAN [US]:U.S.A. [C]:CANADA [GE]:GENERAL EXPORT
[K]:KOREA [E]:EUROPE [UK]:U.K. [A]:AUSTRALIA

1 SAFETY INFORMATION

This product has been designed and manufactured according to FDA regulations "title 21, CFR, chapter 1, subchapter J, based on the Radiation Control for Health and Safety Act of 1968", and is classified as a class 1 laser product. There is no hazardous invisible laser radiation during operation because invisible laser radiation emitted inside of this product is completely confined in the protective housings.

The label required in this regulation is shown ①.

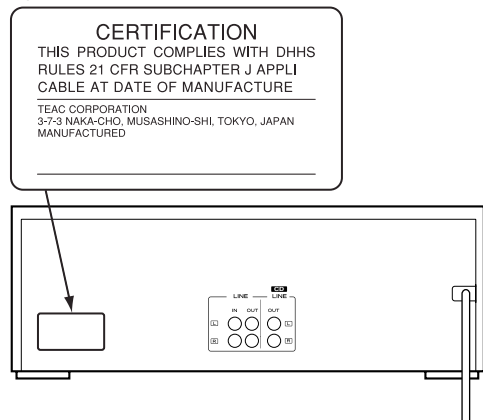
● CAUTION

USE OF CONTROLS OR ADJUSTMENT OR PERFORMANCE OF PROCEDURES OTHER THAN THOSE SPECIFIED HEREIN MAY RESULT IN HAZARDOUS RADIATION EXPOSURE.

Optical pickup:

Type : LTOH96MK or GH5C105A1APK
Manufacturer : SHARP Corporation
Laser output : Less than 0.5 mW on the objective lens
Wavelength : 770-795 nm

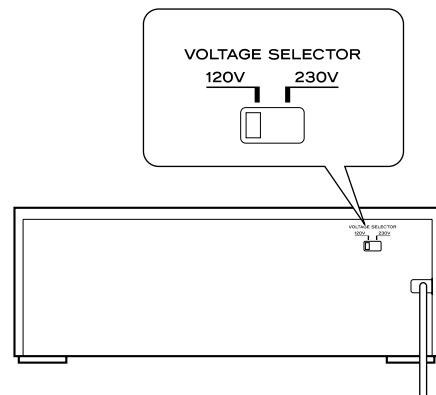
① For U.S.A.



Voltage Conversion (General export models only)

Be sure to remove the power cord from the AC outlet before repositioning the voltage converter switch.

1. Locate the voltage selector on the rear panel.
2. Using a flat-bladed screwdriver, set to the appropriate 230V or 120V position according to your area.



2 SPECIFICATIONS

仕様

CD player section

(Audio)

Number of channels	2
Frequency response	10 - 20,000 Hz \pm 1 dB
Signal-to-noise ratio	90 dB
Dynamic range	90 dB
Total harmonic distortion	0.02% (1 kHz)
Wow and flutter	Unmeasurable (quartz accuracy)
Channel separation	70 dB
Output	2 Vrms
Digital filter	8-times oversampling digital filter

(Signal format)

Sampling frequency	44.1 kHz
D/A converter	16-bit linear/channel
Channel bit rate	4.3218 Mb/sec.
Channel modulation code	EFM
Error correction	CIRC

Cassette section

Track system	4-track 2-channel stereo
Heads	Record/playback x 1 (rotary reverse) erase x 1
Type of tape	Cassette tape C-60, C-90
Tape speed	4.76 cm/sec.
Motor	DC servo motor x 1
Wow and flutter	0.08% (W. RMS)
Frequency response (overall)	63 - 15,000 Hz \pm 3 dB, chrome 63 - 14,000 Hz \pm 3 dB, normal
Signal-to-noise ratio (overall)	57 dB (Dolby NR off, 3% THD level, weighted) 66 dB (DOLBY NR on, over 5 kHz)
Fast winding time	Approx. 120 sec. (with C-60)
Input	Line; 300mV (input impedance of 50 kohms or more)
Output	Line; 300mV (load impedance of 50 kohms or more) Headphones; 5mW/33 ohms

General

Power requirements	120/230 V AC, 50-60 Hz (U.S.A./Canada/general export model) 230 V AC, 50 Hz (Europe/U.K. model)
Power consumption	18 W
Dimensions (W x H x D)	435 x 147 x 293 mm (17-1/8" x 5-13/16" x 11-9/16")
Weight	5.5 kg (12-5/8 lbs.)
Standard Accessories	Wireless remote control RC-778 x 1 Pin plug cord x 2 Battery (SUM-3, "AA", "R6" type) x 2

- Improvements may result in specification or feature changes without notice.

Dolby noise reduction manufactured under license from Dolby Laboratories Licensing Corporation.
"DOLBY" and the double-D symbol  are trademarks of Dolby Laboratories Licensing Corporation.

CDプレーヤー部

オーディオチャンネル数	2チャンネル
周波数特性	10~20,000Hz \pm 1dB
SN比	90dB
高調波歪率	0.02% (1kHz)
ワウ・フラッター	測定限界値以下 (水晶共振精度)
チャンネルセパレーション	70dB
ピッチコントロール	約 \pm 12%
出力 (RCA)	2V
デジタルフィルター	8倍オーバーサンプリングデジタルフィルター

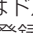
カセット部

トラック方式	4トラック2チャンネル ステレオ
ヘッド構成	録音/再生ヘッド x 1 (回転リバース式) 消去ヘッド x 1
テープ速度	4.76cm/sec
ピッチコントロール	約 \pm 12%
モーター	DCサーボモーター x 1
ワウ・フラッター	0.08% (W.RMS)
周波数特性 (総合)	63~15,000Hz \pm 3dB : クローム 63~14,000Hz \pm 3dB : ノーマル
SN比 (総合)	57dB (ドルビーNRオフ, 3%THDレベルWTD) 66dB (ドルビーB NRオン, 5kHz以上)
早巻時間	約120秒 (C-60テープ)
ライン入力 (RCA)	300mV (入力インピーダンス50k Ω)
ライン出力 (RCA)	300mV (負荷インピーダンス50k Ω)
ヘッドホン出力	5mW/33 Ω

一般

電源	100V AC 50-60Hz
消費電力	18W
外形寸法	435 x 147 x 293mm (WxHxD)
質量	5.5kg
付属品	リモコン RC-778 x 1個 オーディオケーブル x 2本 乾電池 (単3、SUM-3) x 2本 取扱説明書 保証書

- 仕様および外観は、改善のため予告なく変更することがあります。

ドルビーノイズリダクションはドルビーラポラトリーズライセンシングコーポレーションからの実施権に基づき製造されています。
ドルビー、DOLBY及びダブルD記号  はドルビーラポラトリーズライセンシングコーポレーションの登録商標です。

3 ADJUSTMENTS AND CHECKS

調整と確認

3-1 CD PLAYER SECTION

3-1-1 Pitch control adjustment

1. Connect the frequency counter to the CD OUT.
2. Turn on a CD PITCH CONTROL switch at the stop mode.
3. Play the track 2 (1kHz, 0dB) of the MCD-111.
4. Set a CD PITCH CONTROL knob to a center, and adjust R811 of CONTROL PCB so that the output becomes 1kHz.
5. When the CD PITCH CONTROL knob is rotated to the - side, make sure the frequency becomes 880 Hz or lower, and make sure it becomes 1,120 Hz or higher when the knob is rotated to the + side.

3-1-2 Output level check

1. Connect the AC voltmeter to the CD OUT.
2. Play the track 2 (1kHz, 0dB) of the MCD-111, and check the output level.
Specification: $2.0 \pm 0.5V_{rms}$

3-1-3 Distortion check

1. Connect the distortion meter to the CD OUT.
2. Play the track 2 (1kHz, 0dB) of the MCD-111, and check the distortion.
Specification: 0.03% or less (400Hz HPF + 22kHz LPF)

3-1-4 Frequency response check

1. Play the track 3-6 (20Hz - 20kHz, 0dB) of the MCD-111, and check that output level are within the specified values with respect to the 1kHz reference level.
Specification: within $\pm 1dB$

3-1-5 S/N check

1. Play the track 7 (non-signal) of the MCD-111, and check that noise level are within the specified values with respect to the 1kHz reference level.
Specification: 83dB or more (22kHz LPF + IEC-A)

3-1-6 Channel separation check

1. Play the track 8 (L:1kHz / R:non-signal) of the MCD-111, and check the leakage from Lch to Rch.
2. In the same way, play the track 10 (R:1kHz / L:non-signal) of the MCD-111, and check the leakage from Rch to Lch.
Specification: 70dB or more (22kHz LPF + IEC-A)

3-1 CDプレーヤー部

3-1-1 ピッチコントロール調整

1. CD OUT端子に周波数カウンターを接続する。
2. 停止状態でCD PITCH CONTROLスイッチをONにする。
3. MCD-111の2曲目(1kHz, 0dB)を再生する。
4. CD PITCH CONTROLつまみをセンターにセットし、出力が1kHzになるように、CONTROL PCBのR811を調整する。
5. CD PITCH CONTROLつまみを一方方向に回したとき、周波数が880Hz以下、+方向に回したとき、1,120Hz以上になることを確認する。

3-1-2 出力レベルチェック

1. CD OUT端子にACボルトメーターを接続する。
2. MCD-111の2曲目(1kHz, 0dB)を再生し、出力レベルを確認する。
規格: $2.0 \pm 0.5V_{rms}$

3-1-3 歪率チェック

1. CD OUT端子に歪率計を接続する。
2. MCD-111の2曲目(1kHz, 0dB)を再生し、歪率を確認する。
規格: 0.03%以下 (400Hz HPF + 22kHz LPF)

3-1-4 周波数特性チェック

1. MCD-111の3~6曲目(20Hz~20kHz, 0dB)を再生し、基準レベル(1kHz, 0dB)に対し規格内にあることを確認する。
規格: $\pm 1dB$ 以内

3-1-5 S/Nチェック

1. MCD-111の7曲目(無信号)を再生し、ノイズレベルが基準レベルに対し規格内であることを確認する。
規格: 83dB以上 (22kHz LPF + IEC-A)

3-1-6 チャンネルセパレーションチェック

1. MCD-111の8曲目(L:1kHz / R: 無信号)を再生し、Rchへの漏れを確認する。
2. 同様に10曲目(R:1kHz / L: 無信号)を再生し、Lchへの漏れを確認する。
規格: 70dB以上 (22kHz LPF + IEC-A)

3-2 CASSETTE DECK SECTION

- Before performing adjustments and checks clean and demagnetize the entire tape path.
- In general, adjustments and checks are made in the order of Lch then Rch. Double REF. Nos. indicate Lch/Rch. (Example; R181/R182)
- 0dB is referenced to 0.775V.
- The AC voltmeter used in the procedures must have an input impedance of 1MΩ or more.
- Unless specified otherwise, adjustments and checks are made in FWD direction.

3-2 カセットデッキ部

- 調整・確認の前に、テープ走行系の消磁と清掃を行なってください。
- 特に指定のない限り、調整はLch, Rchの順序で行なってください。尚、R181/R182のように記されている回路番号はLch/Rchを示します。
- 0dBは0.775Vです。
- 測定に使用するレベル計の入カインピーダンスは1MΩ以上のものを使用してください。
- 特に指定のない場合、調整および確認はFWD方向で行なってください。

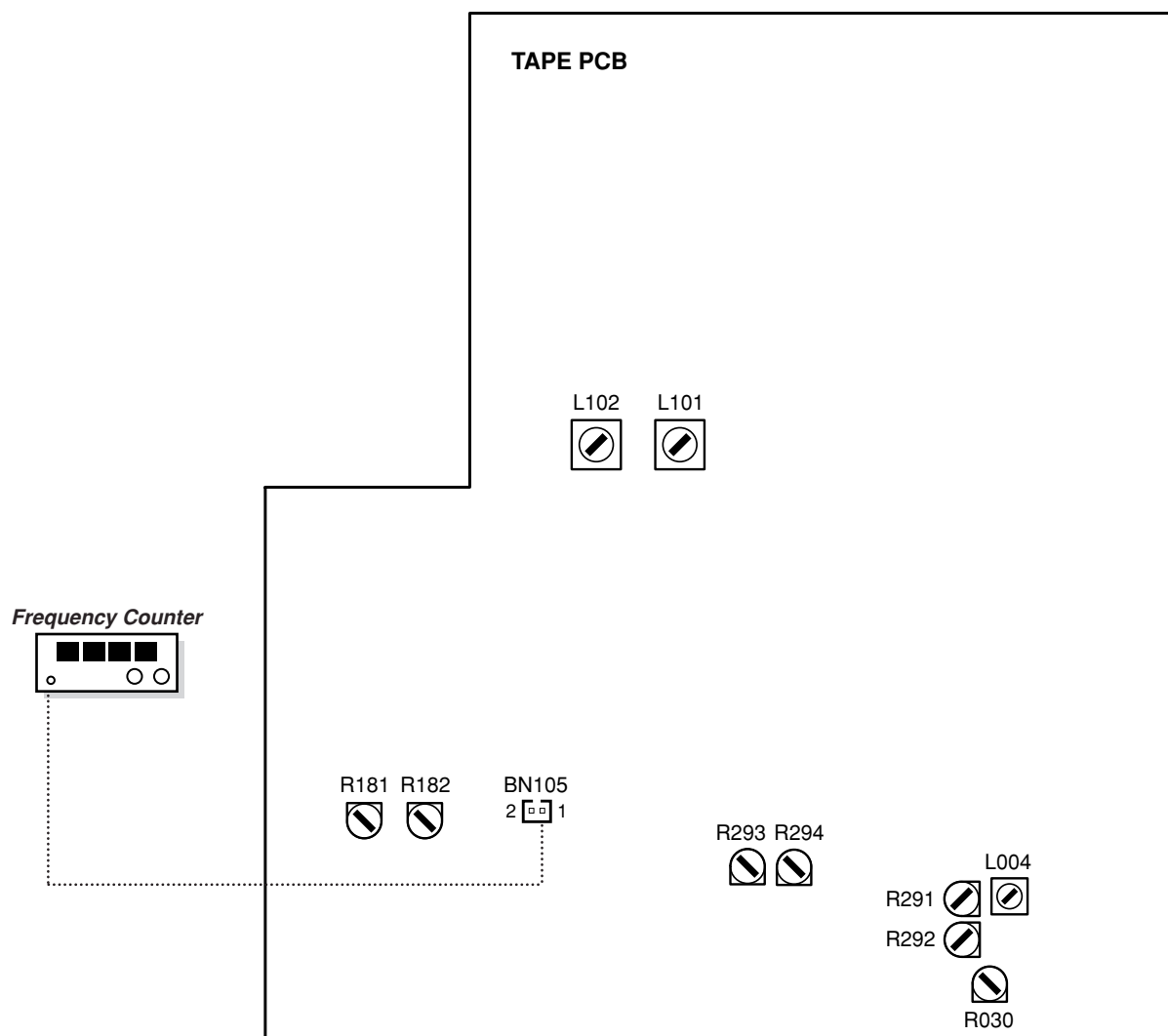


Fig. 3-1 Adjustment locations

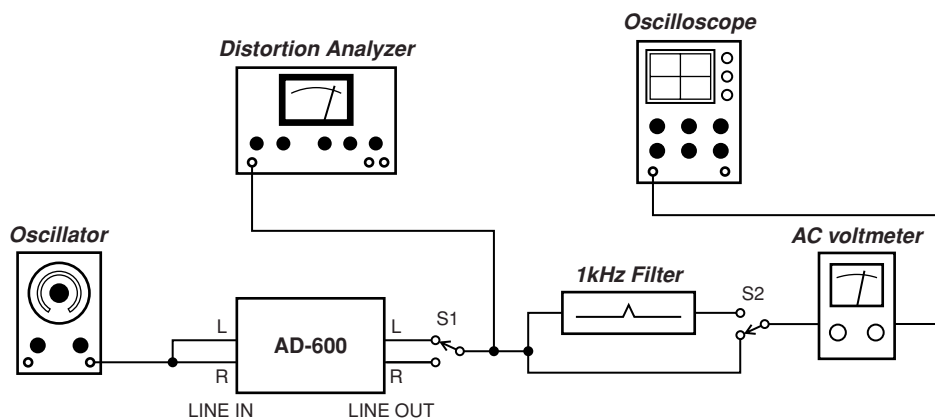


Fig. 3-2 Basic test setup

3-2-1 Mechanical performance 機構系

ITEM 項目	SETTING 設定	TEST TAPE テストテープ	ADJUSTMENTS 調整ヶ所	MEASURING POINTS, RESULT 測定ヶ所・調整値
1. Wow and flutter ワウ・フラッタ	PITCH CONTROL: Center FWD and REV play	MTT-111N	Check	0.19% or less (WRMS)
2. Tape speed テープ速度	PITCH CONTROL: Center FWD play	MTT-111N	CONTROL PCB R652	3,000±20Hz
	REV play	MTT-111N	Check	3,000±75Hz
3. Pitch control variable range ピッチコントロール 可変幅		MTT-111N	Check	PITCH CONTROL - : 2,640Hz or lower PITCH CONTROL + : 3,360Hz or higher

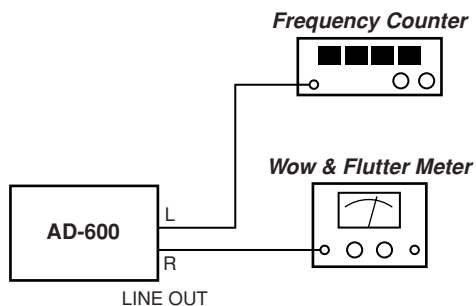


Fig. 3-3

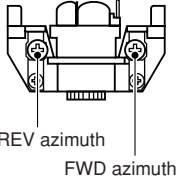
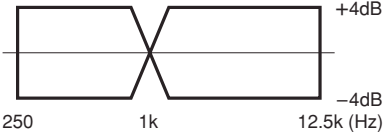
3-2-2 Playback performance 再生系

Deck settings:

Mode: PLAY
 DOLBY NR Switch: OFF
 PITCH CONTROL: Center

TEAC test tapes:

MTT-150C : For Dolby level calibration
 MTT-25702 : For playback frequency response check NORMAL tape
 MTT-5513 : For S/N check NORMAL tape

ITEM 項目	SETTING 設定	INPUT SIGNAL 入力信号	ADJUSTMENTS 調整ヶ所	MEASURING POINTS, RESULT 測定ヶ所・調整値	REMARKS 備考
1. Head azimuth adjustment アジマス調整	Connection: Fig. 3-4 Check and adjust in FWD, REV respectively FWD、REVそれぞれ調整・確認	MTT-25702 (12.5kHz)	Azimuth screws	LINE OUT: Maximum output level at L & R-ch Phase: within 45° Lch、Rchとも出力最大位相: 45° 以内 (Fig. 3-5)	
2. Playback output level 再生出力レベル	Connection: Fig. 3-2	MTT-150C	R181/R182	LINE OUT: -8.2dB (300mV)	Ref. output level 基準出力レベル
3. Meter level メーターレベル		MTT-150C	Check	LEVEL METER: 0dB±1 dot	
4. PHONES output level PHONES 出力レベル	Connection: Fig. 3-2 PHONES LEVEL: MAX	MTT-150C	Check	PHONES: -5.7±3dB (280mV~560mV)	32 Ω load 32Ω負荷
5. Playback frequency response 再生周波数特性	Connection: Fig. 3-2	MTT-25702	Check		
6. Playback S/N ratio 再生S/N比	Connection: Fig. 3-2	MTT-5513 Playback the leader tape portion リーダーテープ部を再生	Check	46dB min.	Ratio of ref. level to noise 基準出力レベルとノイズの比

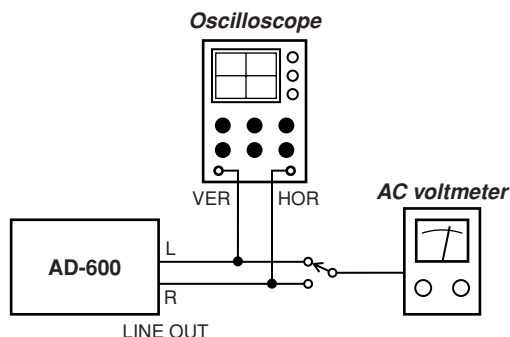


Fig. 3-4

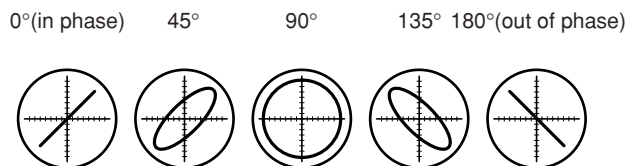


Fig. 3-5

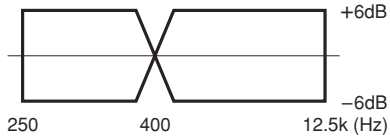
3-2-3 Recording performance 録音系

Deck settings:

Mode: REC/PLAY
 DOLBY NR Switch: OFF
 PITCH CONTROL: Center
 SOURCE Switch: LINE
 REC LEVEL Control: Specified position (Item 2)

TEAC recording test tapes:

MTT-5513 : For NORMAL
 MTT-5563 : For CrO2

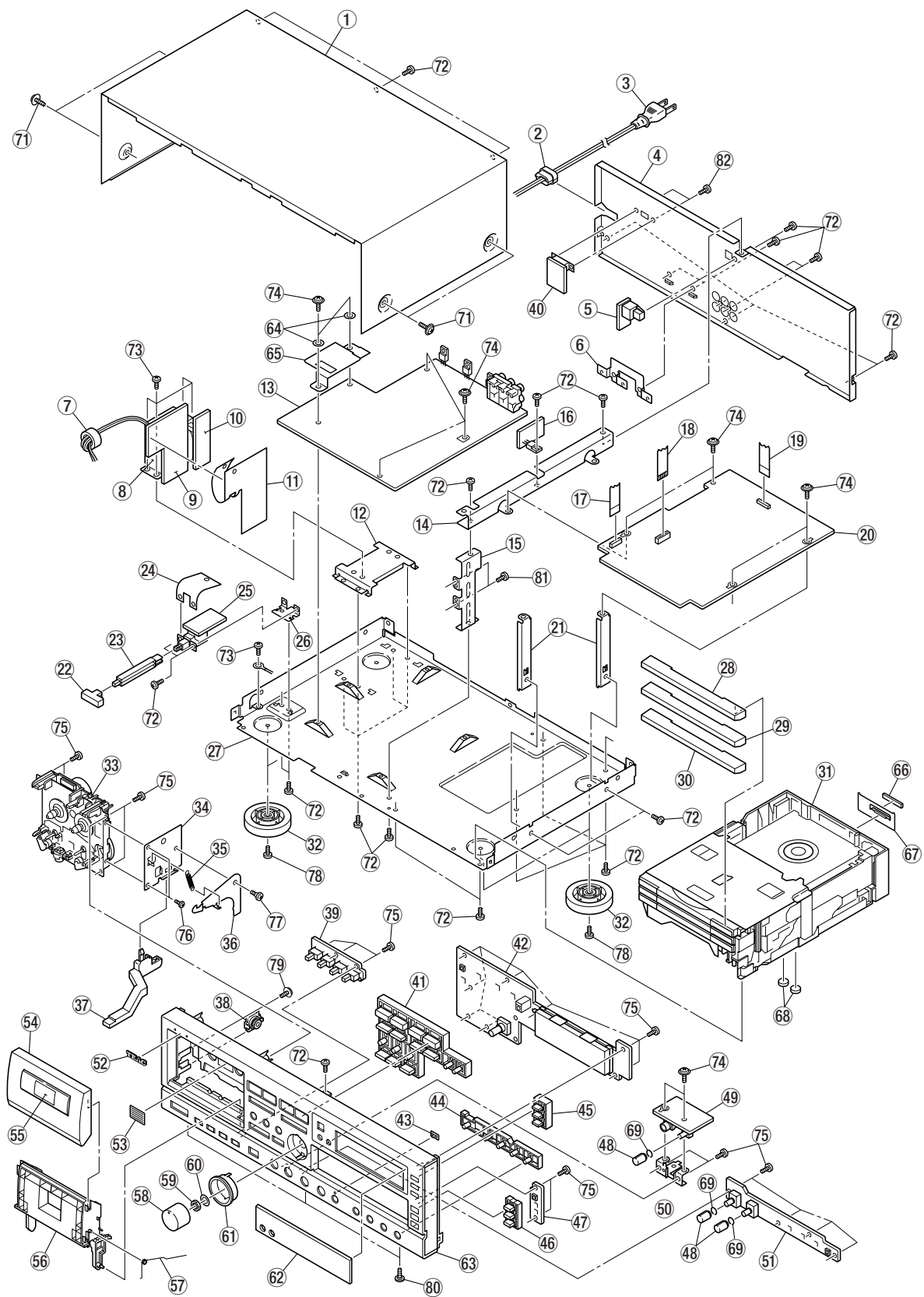
ITEM 項目	SETTING 設定	INPUT SIGNAL 入力信号	ADJUSTMENTS 調整ヶ所	MEASURING POINTS, RESULT 測定ヶ所・調整値	REMARKS 備考
1. Min. LINE input level ライン最小入力レベル	Connection: Fig. 3-2 REC LEVEL: Max. Mode: REC-PAUSE	400Hz/−19dB (87mV)	Check	LINE OUT: −8.2±3dB (210mV~420mV)	
2. Specified LINE input level ライン規定入力レベル	Connection: Fig. 3-2 Mode: REC-PAUSE	400Hz/−8.2dB (300mV)	REC LEVEL	LINE OUT: −8.2dB (300mV)	After adjusting, do not move (Specific position) 調整後は動かさないこと (規定位置)
3. Bias osc frequency バイアス発振周波数	Connection: Fig. 3-1 TAPE: MTT-5513 Mode: REC-PAUSE	No signal	L004	BN105 Pin 1: 85±3kHz	
4. Record bias 録音バイアス	Connection: Fig. 3-2 TAPE: MTT-5513 MTT-5563	250Hz/10kHz −34dB (15mV)	NORMAL: R291/R292 CrO2: R030	LINE OUT: Nearly equal level at both frequencies 両周波数の録再出力が同レベル (±0.5dB)	
5. MPX filter MPXフィルター	Connection: Fig. 3-2 TAPE: MTT-5513	19kHz/−12dB (195mV)	L101/L102	30dB min.	Ratio of ref. level to signal 基準出力レベルに対する比
6. Record level 録音レベル	Connection: Fig. 3-2 TAPE: MTT-5513	400Hz/−8.2dB (300mV)	R293/R294	LINE OUT: −8.2±1dB (270mV~330mV)	
	TAPE: MTT-5563		Check	LINE OUT: −8.2±1.5dB (252mV~357mV)	
7. Total harmonic distortion 総合歪率	Connection: Fig. 3-2 TAPE: MTT-5513 MTT-5563	400Hz/−12dB (195mV)	Check	NORMAL: 2.0% or less CrO2 : 2.5% or less	
8. Overall frequency response 録再周波数特性	Connection: Fig. 3-2 TAPE: MTT-5513 MTT-5563	250Hz−12.5kHz −34dB (15mV)	Check		
9. Overall S/N ratio 総合S/N比	Connection: Fig. 3-2 TAPE: MTT-5513 MTT-5563	No signal	Check	NORMAL: 45dB min. CrO2 : 46dB min.	Ratio of ref. level to noise 基準出力レベルとノイズの比

ITEM 項目	SETTING 設定	INPUT SIGNAL 入力信号	ADJUSTMENTS 調整ヶ所	MEASURING POINTS, RESULT 測定ヶ所・調整値	REMARKS 備考
10. Erase efficiency 消去率	Connection: Fig. 3-2 TAPE: MTT-5563 1kHz B.P.F in	1kHz/+1dB (870mV)	Check	60dB min.	Ratio of the 1kHz recorded portion to the erased portion. 未消去部分と消去部分の比
11. REC MUTE function REC MUTE 効果	Connection: Fig. 3-2 TAPE: MTT-5563 1kHz B.P.F in	1kHz/+1dB (870mV)	Check	55dB min.	Ratio of the 1kHz recorded portion to the "REC MUTE" portion. 録音部分と"REC MUTE" 部分の比
12. Channel separation チャンネルセ パレーション	Connection: Fig. 3-2 TAPE: MTT-5563 1kHz B.P.F in	Lch: 1kHz/−9dB (275mV) Rch: No signal	Check	35dB min.	Ratio of Lch (1kHz) to Rch (no signal). Lch (1kHz) とRch (無信 号) の比
13. Adjacent track crosstalk トラック間 クロストーク	Connection: Fig. 3-2 TAPE: MTT-5563	Lch: No signal Rch: 125Hz/−9dB (275mV)	Check	40dB min.	Invert tape and play Rch track. Check leakage level against the output reference of previously recorded portion. テープを反転して再生した 時のRch出力レベルの比
14. CD DUBBING function CD DUBBING 機能	Connection: Fig. 3-2 SOURCE: CD CD DUBBING: On TAPE: MTT-5513	MCD-111 Track 21 (1kHz/−10dB)	Check	LINE OUT: −8.2±1.5dB (252mV~357mV)	

4 EXPLODED VIEWS AND PARTS LIST

分解図とパーツリスト

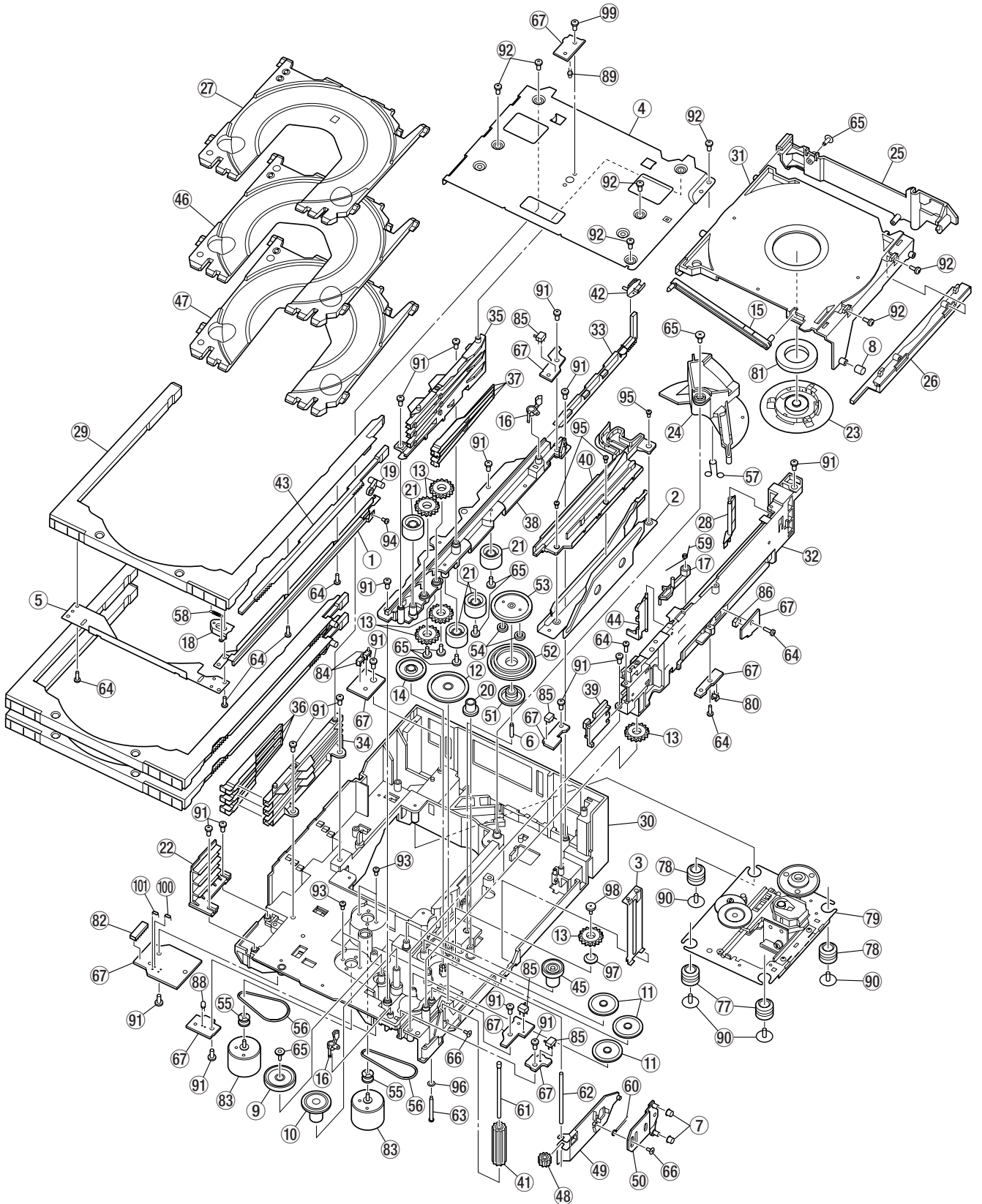
EXPLODED VIEW-1



EXPLODED VIEW-1

REF. NO.	PARTS NO.	DESCRIPTION	REF. NO.	PARTS NO.	DESCRIPTION
1- 1	* 3M0026000D	BONNET	1-45	3M0108200A	KNOB, DISC
1- 2	△ * 3M000880	BUSHING, #2271	1-46	3M0108300A	KNOB, CD OPEN
1- 3	△ 3E002120	POWER CORD [J]	1-47	* 3E9525900A	PCB ASSY, FRONT (C)
	△ 3E009230	POWER CORD [US, C, GE]	1-48	3M0108600A	KNOB, VOLUME
	△ 3E006330	POWER CORD [K]	1-49	* 3E9526300A	PCB ASSY, HP
	△ 3E015210	POWER CORD [E]			
	△ 3E000350	POWER CORD [UK]	1-50	* 3M0110000A	BRACKET, PHONE
	△ 3E000360	POWER CORD [A]	1-51	* 3E9525700A	PCB ASSY, FRONT (A)
1- 4	* 3M0109600A	REAR PANEL [J]	1-52	* 3M0051600A	TEAC EMBLEM (GOLD)
	* 3M0109610A	REAR PANEL [US, C, GE]	1-53	3M0062400A	PLATE, REFLECT
	* 3M0109620A	REAR PANEL [K, E, UK, A]	1-54	3M0107900A	DOOR, LID
1- 5	* 3E9526000A	PCB ASSY, DO [J]	1-55	3M0026500B	WINDOW, LID
1- 6	3M0025900A	PLATE, IC	1-56	3M0011100A	CASE, LEAD
1- 7	3E010000	FER. CORE, B18T 25X12X15	1-57	3M0010400A	TORSION SPRING, CASE I
1- 8	△ * 3E0139200B	POWER TRANSFORMER	1-58	3M0108500A	KNOB, REC LEVEL
1- 9	* 3E9526400A	PCB ASSY, TRANS (P) [J]	1-59	* 3M001340	NUT, VR M9
	* 3E9526413A	PCB ASSY, TRANS (P) [US, C, GE]	1-60	* 3M001350	PLAIN WSHR, VR M9.1
	* 3E9526437A	PCB ASSY, TRANS (P) [K]	1-61	3M0109300A	HOLDER, REC LEVEL
	* 3E9526440A	PCB ASSY, TRANS (P) [E, UK]	1-62	3M0108900A	WINDOW, FLT
	* 3E9526460A	PCB ASSY, TRANS (P) [A]	1-63	3M0107800A	FRONT PANEL
1-10	* 3E9526500A	PCB ASSY, TRANS (S)	1-64	* 3M0060100A	PLAIN WASHER, M3 D11.5
1-11	* 3M0115500A	INSUL COVER, A	1-65	* 3M0117700A	SHIELD PLATE, IC
1-12	* 3M0110100A	BRACKET, POWER TRANS	1-66	* 3M0115700A	CUSHION, GUARD
1-13	* 3E9526200A	PCB ASSY, TAPE	1-67	* 3M0116500A	PLATE, FCC GUIDE
1-14	* 3M0109700A	BRACKET, PCB "A"	1-68	* 3M0115400A	CUSHION
1-15	* 3M0109800A	BRACKET, PCB "B"	1-69	3M0062700A	RTNG RING-C, D7.7-0.8
1-16	* 3E9528400A	PCB ASSY, REG			
1-17	* 3E0139000A	FFC, BNCD-P=1.0-K-15-180	1-71	* 3B0001806A	SCREW, J, S M3X6 (BLK)
1-18	* 3E0138900A	FFC, BNCD-P=1.25-K-12-320	1-72	* 3B0005708A	SCREW, BPB M3X8 (BLK)
1-19	* 3E0139100A	FFC, SFBNCD-P=1.0-K-16-320	1-73	* 3B0005408A	SCREW, BPB M4X8
1-20	* 3E9525500A	PCB ASSY, CONTROL	1-74	3B0001306A	SCREW, J, S M3X6
1-21	* 3M0109900A	BRACKET, PCB "C"	1-75	* 3B0000808A	SCREW, BPP M3X8
1-22	3M0030500B	BUTTON, POWER	1-76	* 3B0000004A	SCREW, BPS M2.6X4
1-23	* 3M0108800A	ROD, POWER	1-77	* 3M0010700A	SCREW, 4X1.3S
1-24	* 3M0115600A	INSUL COVER, B	1-78	3B0007206A	SCREW, BPA M3X6
1-25	* 3E9526600A	PCB ASSY, P. SW	1-79	* 3B0002308A	SCREW, J P M3X8 (BLK)
1-26	* 3M0110200A	BRACKET, POWER S/W	1-80	* 3B0007300A	SCREW, FPS TITE M3X6
1-27	* 3M0109500A	CHASSIS, BOTTOM	1-81	* 3B0000810A	SCREW, BPP M3X10
1-28	3M0108000A	DOOR, CD1	1-82	* 3B0004408A	SCREW, BPS M3X8 (BLK) [US, C, GE]
1-29	3M0108010A	DOOR, CD2			
1-30	3M0108020A	DOOR, CD3			
1-31	3M0111400A	CD MECHA ASSY, MGC-F3000			
1-32	3M0047200A	FOOT ASSY			
1-33	* 3M0111500A	MECH ASSY, CMAL2Z213A			
1-34	* 3M0029900A	BRACKET, EJECT A			
1-35	3M0010600A	TORSION SPRING, EJECT			
1-36	* 3M0029800A	HOOK, EJECT A			
1-37	* 3M0108700A	KNOB, EJECT			
1-38	3M0011200A	DAMPER			
1-39	* 3E9525800A	PCB ASSY, FRONT (B)			
1-40	* 3E9526700A	PCB ASSY, V SELECT [US, C, GE]			
1-41	3M0108100A	KNOB, MAIN			
1-42	* 3E9525600A	PCB ASSY, FLD			
1-43	* 3M0109000A	LENS, PITCH CONTROL			
1-44	3M0108400A	KNOB, SKIP			

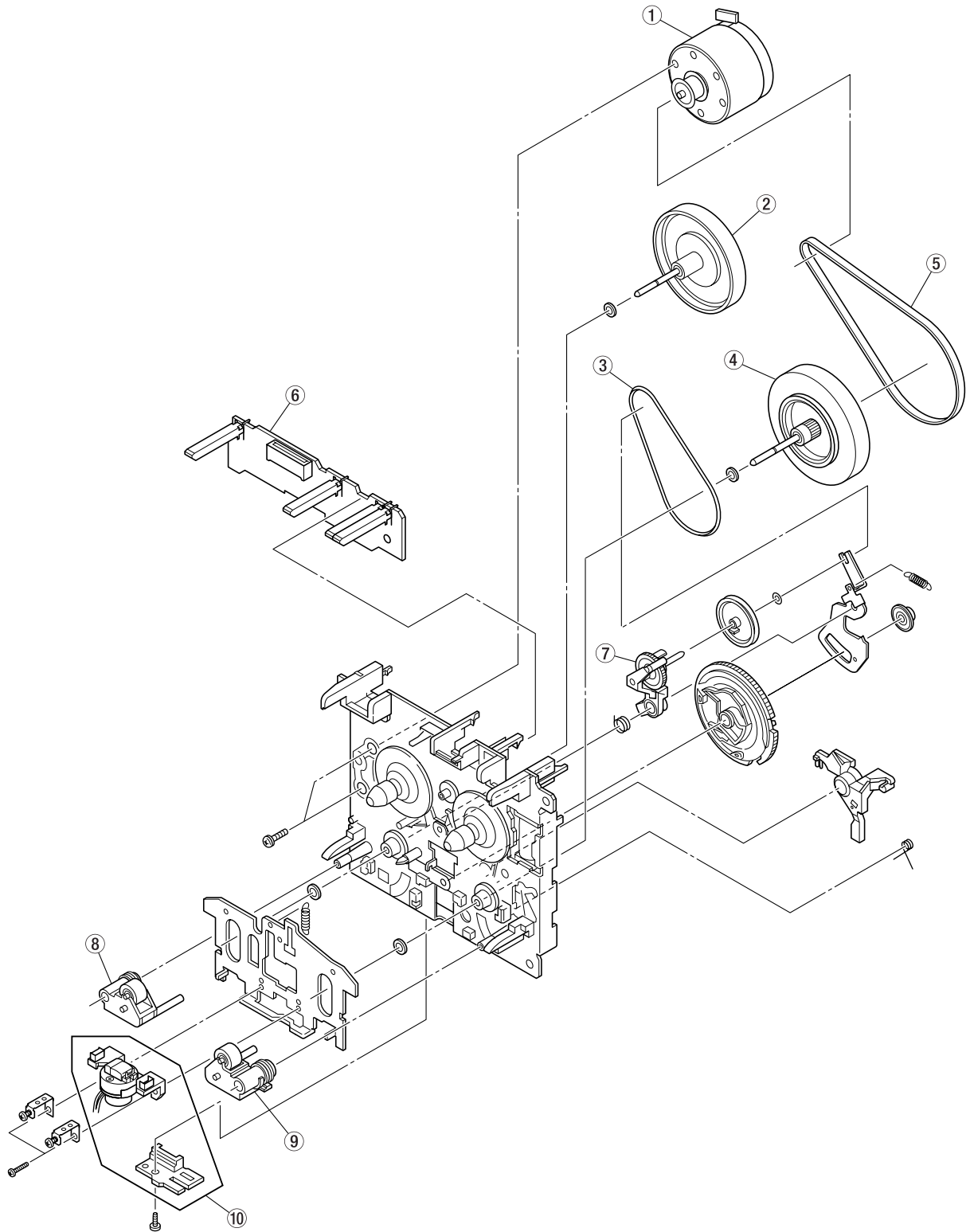
EXPLODED VIEW-2



EXPLODED VIEW-2

REF. NO.	PARTS NO.	DESCRIPTION	REF. NO.	PARTS NO.	DESCRIPTION
2- 1	*9A08676300	REINFORCING HARDWARE (S)	2- 56	9A08681900	BELT
2- 2	*9A08676400	SLIDER (LIFT)	2- 57	*9A08682000	TORSION SPRING (CAM LIFT)
2- 3	*9A08676500	REINFORCING HARDWARE (R)	2- 58	*9A08682100	EXTENSION SPR (TRAY LOCK)
2- 4	*9A08676600	REINFORCING HARDWARE (TOP)	2- 59	9A08682200	TORSION SPR (LACK GEAR)
2- 5	*9A08676700	REINFORCING HARDWARE (F)	2- 60	*9A08682300	TORSION SPR (HOLDER GEAR)
2- 6	*9A08676800	SHAFT (GEAR-C)	2- 61	*9A08682400	SHAFT (GEAR-B)
2- 7	*9A08676900	SHAFT (HOLDER GEAR)	2- 62	*9A08682500	SHAFT (GEAR-A)
2- 8	*9A08677000	SHAFT (HOLDER TRAY)	2- 63	*9A08682600	SHAFT (PULLEY)
2- 9	9A08677100	PULLEY	2- 64	*9A08682700	SCREW (TRAY)
2- 10	9A08677200	GEAR (TRAY MOTOR-A)	2- 65	9A07827800	SCREW (A2)
2- 11	9A08677300	GEAR (TRAY MOTOR-B)	2- 66	*9A07825200	SCREW (SUB-L)
2- 12	9A08677400	GEAR (TRAY MOTOR-C)	2- 67	*9A08682800	PCB (MAIN)
2- 13	9A08677500	GEAR (TRAY-A)	2- 77	9A07825700	INSULATOR 37 (BLUE)
2- 14	9A08677600	GEAR (LIFT MOTOR-A)	2- 78	9A07825800	INSULATOR 25 (GREEN)
2- 15	*9A08677700	ARM (JOINT)	2- 79	9A08683800	TRAVERSE UNIT
2- 16	9A08677800	ARM (LOAD SW)	2- 80	*9A08683900	PHOTO INT, GP1S93
2- 17	9A08677900	LACK (GEAR)	2- 81	*9A08684000	MAGNET (2)
2- 18	*9A08678000	ARM (TRAY-SUB)	2- 82	*9A08684100	CONNECTOR, 15FMN-STK
2- 19	*9A08678100	ARM (TRAY-LOCK)	2- 83	9A08684200	DC MOTOR, MDN4BT3MEA
2- 20	*9A08678200	GEAR (LIFT-IDLER)	2- 84	9A08684300	SWITCH, MPU10184MLB0
2- 21	9A08678300	GEAR (IDLER)	2- 85	9A08684400	SWITCH, MPU11470MLB0
2- 22	9A08678400	GUIDE (TRAY OUTER-L)	2- 86	9A08684500	SWITCH, MPU11301MLB0
2- 23	9A08678500	CLAMPER	2- 88	9A07825000	PHOTO TR, RPT-38PB3F
2- 24	9A08678600	CAM (LIFT)	2- 89	*9A07746000	LED, SIR-34ST3F
2- 25	*9A08678700	HOLDER (LIFT)	2- 90	9A07827900	SCREW, TAP TITE 2.6X6
2- 26	*9A08678800	HOLDER (TRAY-R)	2- 91	9A08684600	SCREW, BIND TAPPING 2.6X8
2- 27	*9A08678900	TRAY (SUB)	2- 92	*9A08684700	SCREW, BIND TAPPING 2.6X6 (BL)
2- 28	*9A08679000	ARM (SWITCH CLOSE)	2- 93	*9A08684800	SCREW, SEMS 2X4
2- 29	*9A08679100	TRAY (MAIN)	2- 94	*9A08684900	SCREW, TAPPING 2X3.5
2- 30	*9A08679200	CHASSIS (MAIN)	2- 95	*9A08685000	SCREW, MACHINE M2X2.5
2- 31	*9A08679300	HOLDER (TRAY TOP)	2- 96	*9A08685100	POLY WS, 1.57X4X0.5 CUT
2- 32	9A08679400	GUIDE (TRAY OUTER)	2- 97	9A08685200	COMPRESSION SPRING (GEAR)
2- 33	*9A08679500	SLIDER (TRAY-B)	2- 98	9A08685300	SCREW (GEAR)
2- 34	*9A08679600	GUIDE (TRAY-L)	2- 99	*9A08685400	SCREW, BIND TAPTITE 2.6X6
2- 35	9A08679700	GUIDE (TRAY-R)	2-100	*9A08685500	RESISTOR, 390 OHM
2- 36	9A08679800	ARM (TRAY CATCH-L)	2-101	*9A07828000	RESISTOR, 330 OHM
2- 37	9A08679900	ARM (TRAY CATCH-R)			
2- 38	*9A08680000	CHASSIS (GUIDE)			
2- 39	*9A08680100	GUIDE (TRAY MID)			
2- 40	9A08680200	GUIDE (CAM)			
2- 41	*9A08680300	GEAR (TRAY-IDLER)			
2- 42	*9A08680400	SLIDER (TRAY-A)			
2- 43	9A08680500	SLIDER (TRAY LOCK)			
2- 44	*9A08680600	ARM (SWITCH OPEN)			
2- 45	9A08680700	PULLEY (B)			
2- 46	*9A08680800	TRAY (SUB-2)			
2- 47	*9A08680900	TRAY (SUB-3)			
2- 48	9A08681000	GEAR (TRAY-FINAL)			
2- 49	*9A08681100	HOLDER (GEAR-B)			
2- 50	*9A08681200	HOLDER (GEAR-C)			
2- 51	9A08681400	GEAR (SUN)			
2- 52	9A08681500	GEAR (INTERNAL)			
2- 53	9A08681600	GEAR (CARRIER)			
2- 54	9A08681700	GEAR (PLANET)			
2- 55	9A08681800	PULLEY (MOTOR-A)			

EXPLODED VIEW-3



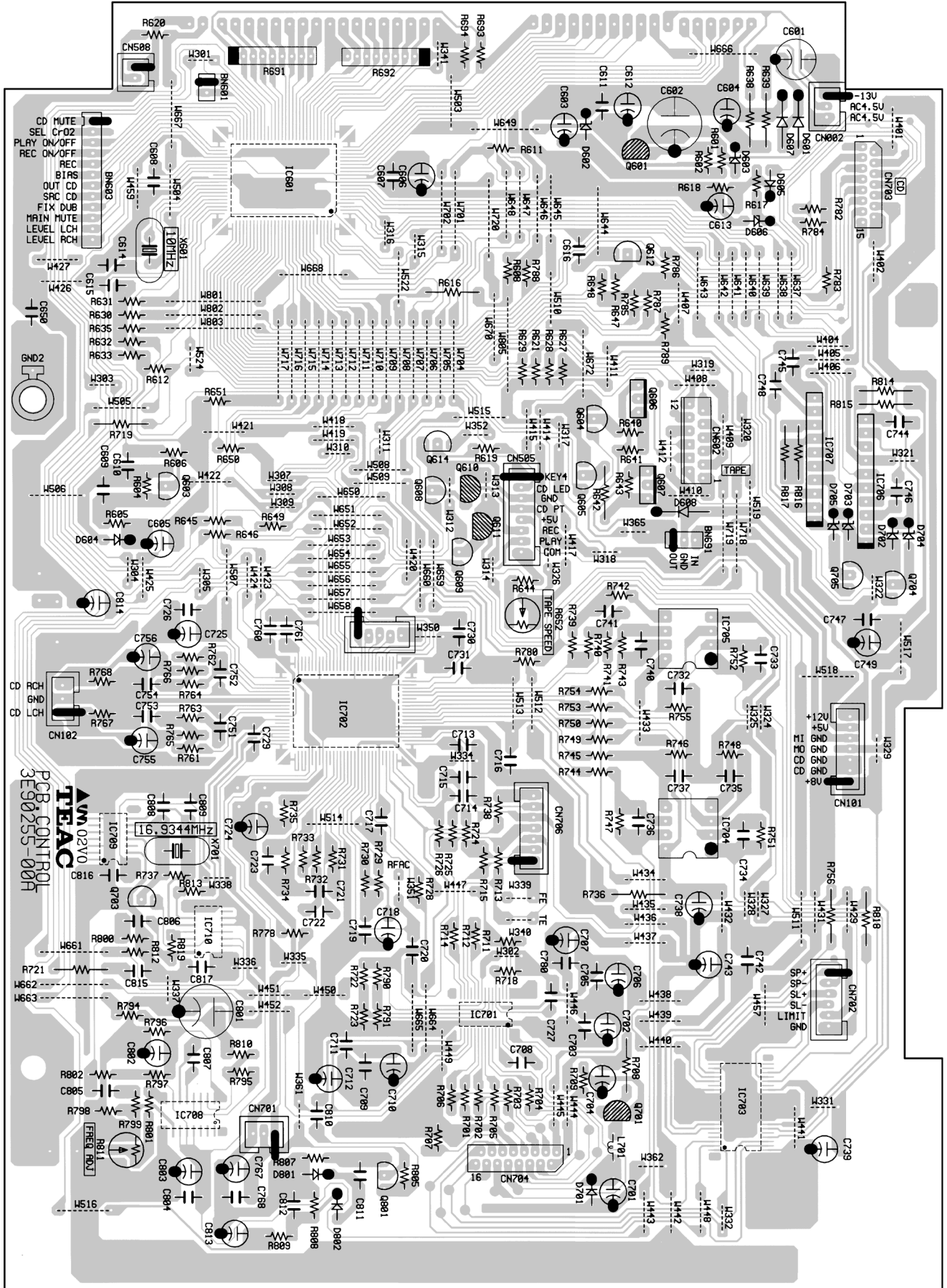
EXPLODED VIEW-3

REF. NO.	PARTS NO.	DESCRIPTION	REMARKS
3- 1	9A08686200	MTR MAIN BLK	
3- 2	9A08686700	ASSY F/W	
3- 3	9A08687000	F/R BELT	
3- 4	9A08686600	ASSY F/W	
3- 5	9A08686500	MAIN BELT	
3- 6	* 9A08686300	PCB CONTROL BLK	
3- 7	9A08686400	CLUTCH ASSY BLK	
3- 8	9A08686900	ROLLER PINCH BLK L	
3- 9	9A08686800	ROLLER PINCH BLK R	
3-10	9A08686100	PLATE HD BLK	

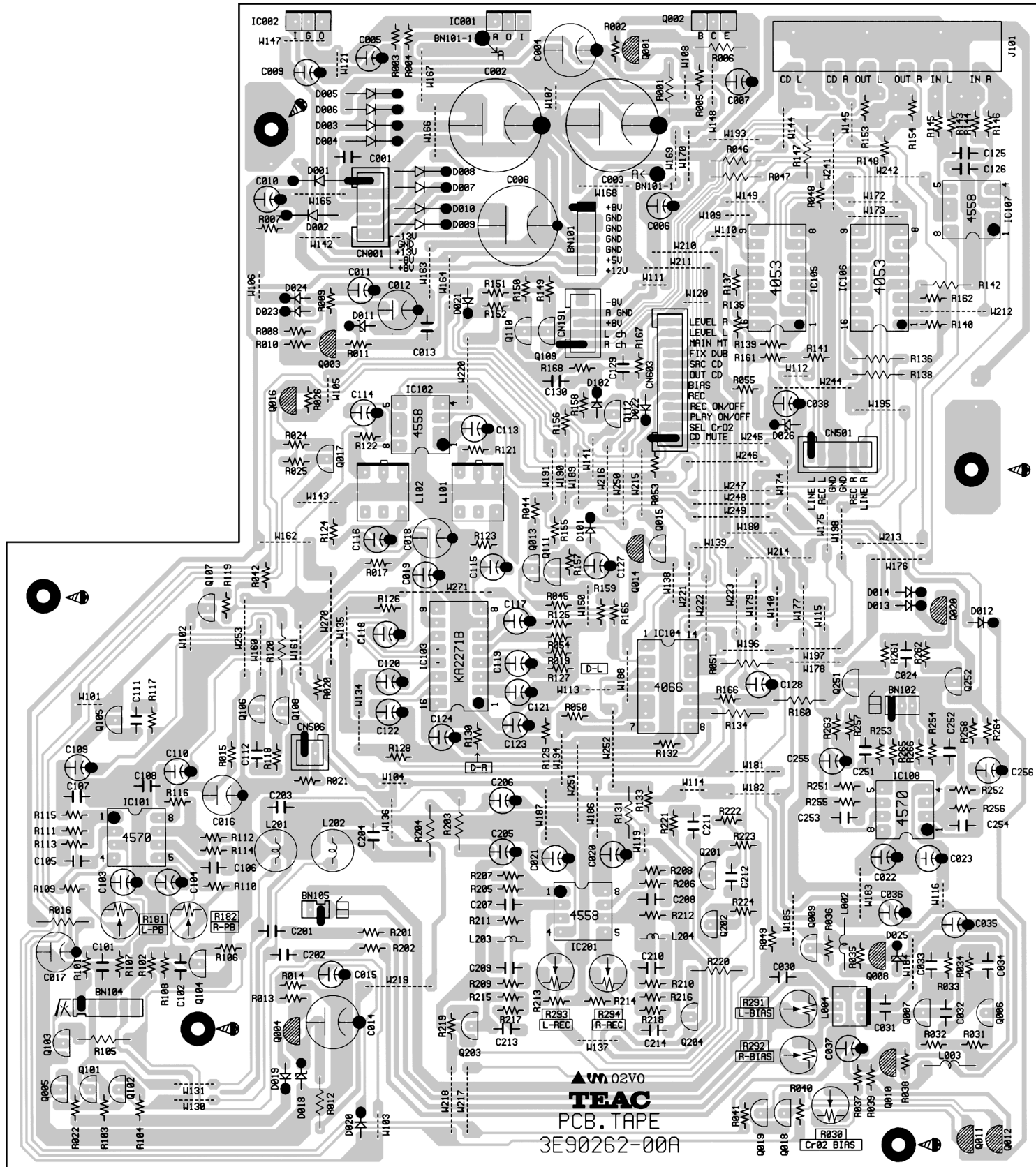
5 PC BOARDS AND PARTS LIST

基板図とパーツリスト

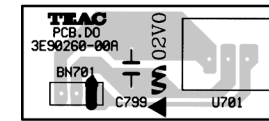
CONTROL PCB



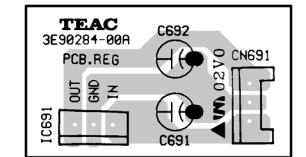
TAPE PCB



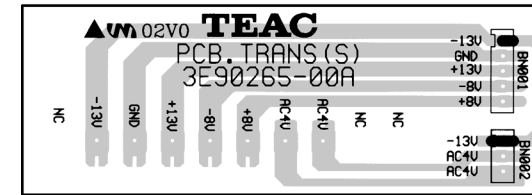
DO PCB



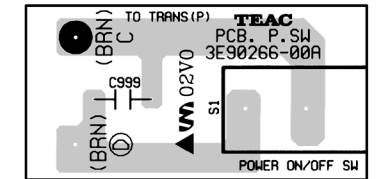
REG PCB



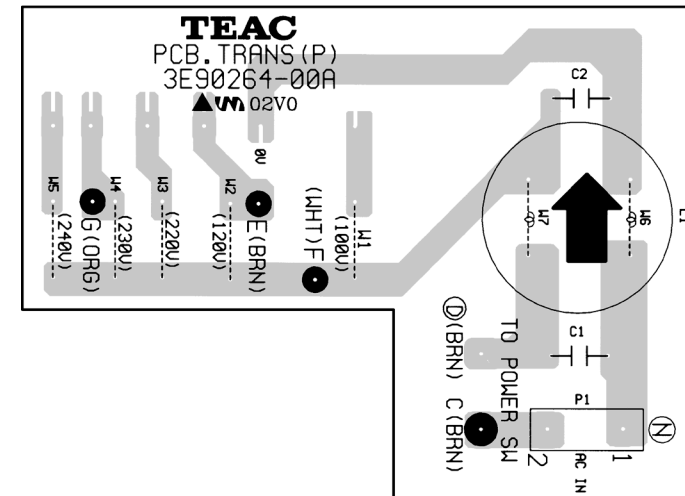
TRANS (S) PCB



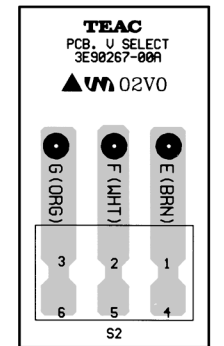
P.SW PCB



TRANS (P) PCB



V SELECT PCB



CONTROL PCB ASSY

REF. NO.	PARTS NO.	DESCRIPTION
	* 3E9525500A	PCB ASSY, CONTROL
C601	△ 3C000580	CE, 63V 220UF M
C602	△ 3C000790	CE, 50V 220UF M
C613	△ 3C000360	CE, 50V 10UF M
CN002	3E010350	CONNECT PLUG, B3B-PH-K-S
CN101	3E010390	CONNECT PLUG, B7B-PH-K-S
CN102	3E001150	CONNECT PLUG, B3B-EH-A
CN505	3E010400	CONNECT PLUG, B8B-PH-K-S
CN508	3E010340	CONNECT PLUG, B2B-PH-K-S
CN602	3E014220	CONNECT, 12FE-BT-VK-N
CN701	3E010350	CONNECT PLUG, B3B-PH-K-S
CN702	3E010380	CONNECT PLUG, B6B-PH-K-S
CN703	3E014200	CONNECT, 15FMM-BTK
CN704	3E014210	CONNECT, 16FMM-BTRK
D601	△ 3S000031	DIODE, 1N4003-TR
D602	3S003591	ZDI, MTZJ30B
D603	3S000681	ZDI, MTZJ5. 1B
D604	3S000241	DIODE, 1SS133
D605	△ 3S000031	DIODE, 1N4003-TR
D606	3S000681	ZDI, MTZJ5. 1B
D607	△ 3S000031	DIODE, 1N4003-TR
D608	3S000031	DIODE, 1N4003-TR
D701	3S000241	DIODE, 1SS133
D702, D703	3S001891	ZDI, MTZJ6. 2B
D704	3S003441	ZDI, MTZJ4. 7B
D705	3S000681	ZDI, MTZJ5. 1B
D801, D802	3S003281	DIODE, RB721Q-40
GND2	3E0043200A	TERMINAL, EARTH PLATE B
IC601	S00419000A	IC, CXP82224-148Q
IC701	3S003300	IC, CXA2581N
IC702	3S003310	IC, CXD2598Q
IC703	3S001590	IC, KA9258D
IC704, 705	3S000260	IC, NJM4558D
IC706, 707	3S003600	IC, BA6209N
IC708	3S002550	IC, BA7082F
IC709	3S001340	IC, 74HCU04AF
IC710	3S001620	IC, 74HC00 SOP
L701	3E003711	COIL, 10UH EC24-100K-T2
Q601	△ 3S000020	TR, 2SA1015GR
Q603	3S000000	TR, 2SC1815GR
Q604, Q605	3S000291	TR, DTC124ES
Q606, Q607	3S003330	TR, 2SB1240 TV20
Q608, Q609	3S000291	TR, DTC124ES
Q610, Q611	3S000301	TR, DTA124ES
Q612, Q614	3S000291	TR, DTC124ES
Q701	3S000020	TR, 2SA1015GR
Q703	3S000741	TR, DTC143TS
Q705	3S000291	TR, DTC124ES
Q801	3S000000	TR, 2SC1815GR
R652	3R004580	VR, SEMI-FIXED RH0615-4. 7K
R758	3R004810	RD, 1/2W 10 OHM J
R811	3R004590	VR, SEMI-FIXED RH0615-10K
R814-R817	3R004840	RD, 1/4W 4. 7 OHM NON FLAME
X601	3E011740	RESONATOR, CST 10. 00MTW
X701	3E013070	X' TAL, 16. 9344MHZ

FLD PCB ASSY

REF. NO.	PARTS NO.	DESCRIPTION
	* 3E9525600A	PCB ASSY, FLD
	* 3M0062200A	RC CUSHION
	* 3M0109200A	HOLDER, FLT
CN504	3E001290	CONNECT PLUG, S3B-PH-K-S
CN507	3E010360	CONNECT PLUG, B4B-PH-K-S
D501, D502	3S000241	DIODE, 1SS133
FL501	3E0131800A	DISPLAY, FL, HNA-11MM33
S501-S515	3E002070	SW, TACT SKQSAB HMR-187
S521-S523	3E002070	SW, TACT SKQSAB HMR-187
S527	3E002070	SW, TACT SKQSAB HMR-187
U501	E0062220	RMCN RCVR, RPM6938-V4
VR503	3R004890	VAR RES, 10KAX2 RK14K12D

FRONT(A) PCB ASSY

REF. NO.	PARTS NO.	DESCRIPTION
	* 3E9525700A	PCB ASSY, FRONT (A)
	* 3M0068404A	LED HOLDER, LED3-4
LED501	3S003480	LED, LSE2040 (ORG)
S516-S520	3E002070	SW, TACT SKQSAB HMR-187
VR501	3R003980	VAR REG, 5KB RK11K113 CC
VR502	3R003980	VAR REG, 5KB RK11K113 CC

FRONT(B) PCB ASSY

REF. NO.	PARTS NO.	DESCRIPTION
	* 3E9525800A	PCB ASSY, FRONT (B)
D503, D504	3S000241	DIODE, 1SS133
S528, S529	3E014560	SW, SLIDE TKR-0022/473
S530	3E014570	SW, SLIDE TKR-0023/474
S531	3E014560	SW, SLIDE TKR-0022/473

FRONT(C) PCB ASSY

REF. NO.	PARTS NO.	DESCRIPTION
	* 3E9525900A	PCB ASSY, FRONT (C)
S524-S526	3E002070	SW, TACT SKQSAB HMR-187

HP PCB ASSY

REF. NO.	PARTS NO.	DESCRIPTION
	* 3E9526300A	PCB ASSY, HP
D091, D092	3S000241	DIODE, 1SS133
GND4	3E0043200A	TERMINAL, EARTH PLATE B
IC191	3S000840	IC, BA4560
J091	3E002140	JACK, JY-6313-01-030GD
L091	3E003721	COIL, 100UH EC24-101K-T2
VR191	3R003920	VAR REG, 50KAX2 RK09K12A

TAPE PCB ASSY

REF. NO.	PARTS NO.	DESCRIPTION
	* 3E9526200A	PCB ASSY, TAPE
C001	△ 3C003340	CQ, 100V 0.022UF J MYLAR
C002, C003	△ 3C001210	CE, 25V 3300UF M
C004	△ 3C000920	CE, 16V 470UF M
C008	△ 3C001200	CE, 16V 3300UF M
C010	△ 3C000360	CE, 50V 10UF M
C011	△ 3C000420	CE, 35V 22UF M
CN001	3E001170	CONNECT PLUG, B5B-EH-A
CN191	3E010370	CONNECT PLUG, B5B-PH-K-S
CN501	3E010380	CONNECT PLUG, B6B-PH-K-S
CN506	3E010340	CONNECT PLUG, B2B-PH-K-S
CN603	3E010440	CONNECT PLUG, B12B-PH-K-S
D001-D010	△ 3S000031	DIODE, 1N4003-TR
D011	3S000671	ZDI, MTZJ4. 3B
D012-D014	3S000241	DIODE, 1SS133
D018	3S001581	ZDI, MTZJ3. 0B
D019-D022	3S000241	DIODE, 1SS133
D023, D024	3S000031	DIODE, 1N4003-TR
D026	3S001891	ZDI, MTZJ6. 2B
D101, D102	3S000241	DIODE, 1SS133
IC001	△ 3S000250	IC, NJM317F
IC002	△ 3S000650	IC, NJM7805FA
IC101	3S000280	IC, UPC4570C
IC102	3S000260	IC, NJM4558D
IC103	3S002520	IC, KA2271B
IC104	3S000430	IC, BU4066BC
IC105, 106	3S000810	IC, TC4053BP
IC107	3S000260	IC, NJM4558D
IC108	3S000280	IC, UPC4570C
IC201	3S000260	IC, NJM4558D
J101	3E014190	JACK, RJ-1074B-09-0320A
L002, L003	3E003711	COIL, 10UH EC24-100K-T2
L004	3E0042800A	TRANS, BIAS OSC 85KHZ
L101, L102	3E003730	FILTER, MPX LPF FXD2
L201, L202	3E003740	FILTER, BIAS TRAP 85KHZ
L203, L204	3E003690	COIL, #7159 8.2MH
Q001	△ 3S000020	TR, 2SA1015GR
Q002	3S000400	TR, 2SB1015Y
Q003, Q004	3S000020	TR, 2SA1015GR
Q005, Q006	3S000000	TR, 2SC1815GR
Q008	3S000020	TR, 2SA1015GR
Q009	3S000291	TR, DTC124ES
Q010	3S000020	TR, 2SA1015GR
Q011, Q012	3S000301	TR, DTA124ES
Q013	3S000000	TR, 2SC1815GR
Q014	3S000301	TR, DTA124ES
Q015	3S000291	TR, DTC124ES
Q016	3S000301	TR, DTA124ES
Q017-Q019	3S000000	TR, 2SC1815GR
Q020	3S000301	TR, DTA124ES
Q101-Q104	3S000000	TR, 2SC1815GR
Q105, Q106	3S000741	TR, DTC143TS
Q107, Q108	3S000000	TR, 2SC1815GR
Q109, Q110	3S000731	TR, 2SD2144S
Q111, Q112	3S000000	TR, 2SC1815GR

TAPE PCB ASSY

REF. NO.	PARTS NO.	DESCRIPTION
Q201-Q204	3S000000	TR, 2SC1815GR
Q251, Q252	3S000731	TR, 2SD2144S
R030	3R004580	VR, SEMI-FIXED RH0615-4.7K
R181, R182	3R004530	VR, SEMI-FIXED RH0615-100
R291, R292	3R004610	VR, SEMI-FIXED RH0615-47K
R293, R294	3R004590	VR, SEMI-FIXED RH0615-10K

DO PCB ASSY

REF. NO.	PARTS NO.	DESCRIPTION
	* 3E9526000A	PCB ASSY, DO [J]
U701	3S002290	IC, GP1F32T

TRANS(S) PCB ASSY

REF. NO.	PARTS NO.	DESCRIPTION
	* 3E9526500A	PCB ASSY, TRANS(S)

TRANS(P) PCB ASSY

REF. NO.	PARTS NO.	DESCRIPTION
	* 3E9526400A	PCB ASSY, TRANS(P) [J]
	* 3E9526413A	PCB ASSY, TRANS(P) [US, C, GE]
	* 3E9526437A	PCB ASSY, TRANS(P) [K]
	* 3E9526440A	PCB ASSY, TRANS(P) [E, UK]
	* 3E9526460A	PCB ASSY, TRANS(P) [A]
L1	△ 3E004290	COIL, 1MH/1.5A [E, UK]
P1	3E002170	PIN, TERMINAL LAPPING 2P

REG PCB ASSY

REF. NO.	PARTS NO.	DESCRIPTION
	* 3E9528400A	PCB ASSY, REG
CN691	3E001430	CONNECT PLUG, S3B-EH-A
IC691	△ 3S002170	IC, NJM7812FA

P.SW PCB ASSY

REF. NO.	PARTS NO.	DESCRIPTION
	* 3E9526600A	PCB ASSY, P. SW
C999	△ 3E004300	S. KILLER, CS12-F2GA472MYAS
S1	△ 3E003770	SW, POWER SDDL1-A2-F-1

V SELECT PCB ASSY

REF. NO.	PARTS NO.	DESCRIPTION
	* 3E9526700A	PCB ASSY, V SELECT [US, C, GE]
S2	△ 3E002110	SW, SLIDE SL13B-022

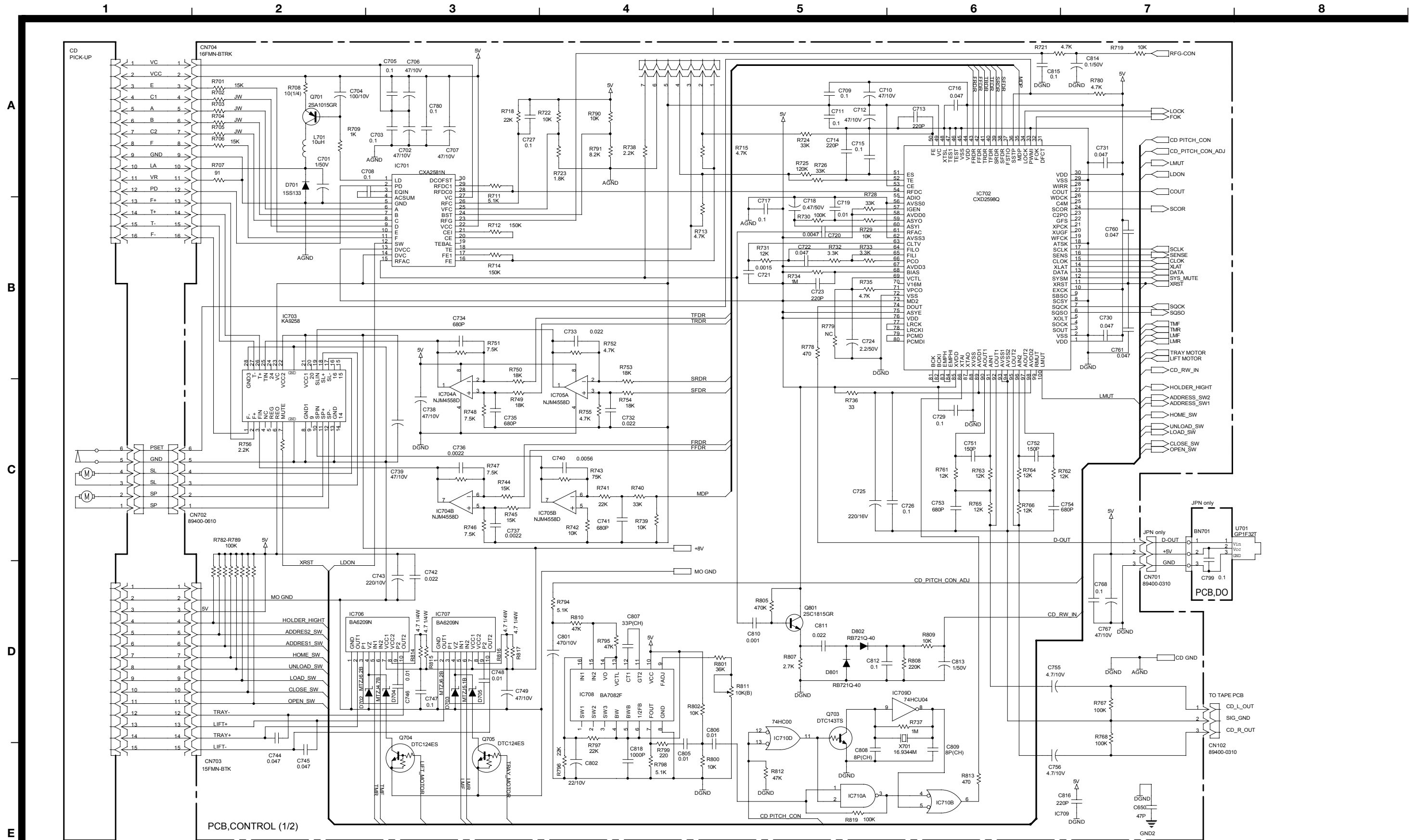
6 INCLUDED ACCESSORIES

付属品

INCLUDED ACCESSORIES

REF. NO.	PARTS NO.	DESCRIPTION	REMARKS
	3D0039400A	OWNER'S MNL, JPN [J]	
	3D0039500A	OWNER'S MNL, E/F/G/I/S [EXCEPT J]	
	3E0139300A	REMOTE CONTROL UNIT, RC-778	
	* 3E003660	BATTERY, UM-3 (2P X ED)	
	* 3E000380	PIN CORD	

TEAC SCHEMATIC DIAGRAM AD-600 CONTROL PCB (1/2), DO PCB



INSTRUCTIONS FOR SERVICE PERSONNEL
BEFORE RETURNING APPLIANCE TO THE CUSTOMER, MAKE LEAKAGE-CURRENT OR RESISTANCE MEASUREMENTS TO DETERMINE THAT EXPOSED PARTS ARE ACCEPTABLY INSULATED FROM THE SUPPLY CIRCUIT.

NOTES:
 1. Resistor values are in ohms (k=kilo-ohms, M=megohms).
 2. Capacitor values are in microfarads (p=picofarads).
 3. Δ Parts marked with this sign are safety critical components. They must always be replaced with identical components—refer to the appropriate parts list and ensure exact replacement.

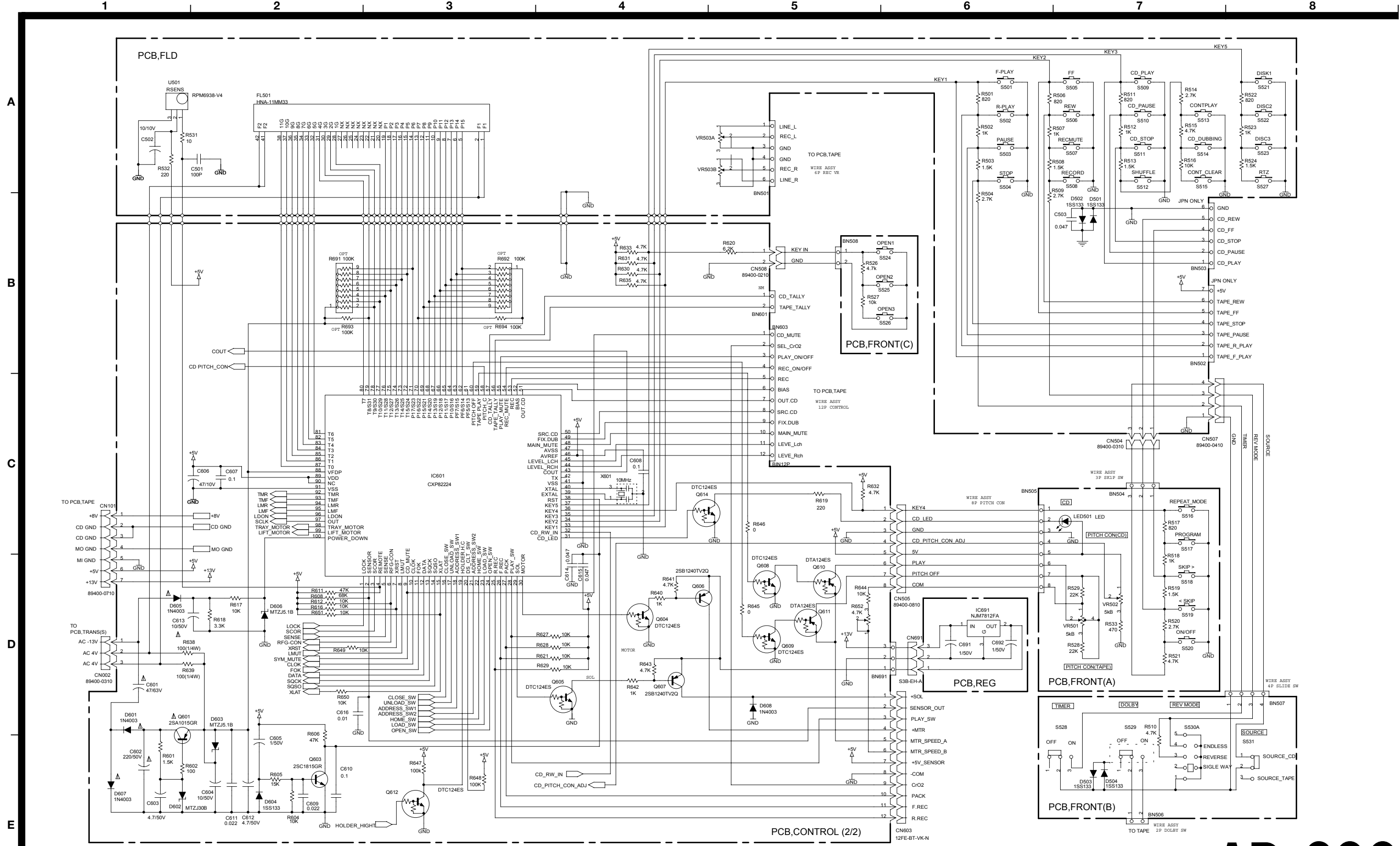
注意
 1. 抵抗の単位は Ω (k=k Ω , M=M Ω) です。
 2. コンデンサの単位は μF (p=pF) です。
 3. Δ マークのある部品は安全規格重要部品です。交換するときは必ずティアック指定の部品を使用してください。

AD-600

Compact Disc Multi Player/Reverse Cassette Deck

2nd Issue; October 2000

TEAC SCHEMATIC DIAGRAM AD-600 CONTROL PCB (2/2), FLD PCB, FRONT (A) PCB, FRONT (B) PCB, FRONT (C) PCB, REG PCB



INSTRUCTIONS FOR SERVICE PERSONNEL
BEFORE RETURNING APPLIANCE TO THE CUSTOMER, MAKE LEAKAGE-CURRENT OR RESISTANCE MEASUREMENTS TO DETERMINE THAT EXPOSED PARTS ARE ACCEPTABLY INSULATED FROM THE SUPPLY CIRCUIT.

NOTES:
 1. Resistor values are in ohms (k=kilo-ohms, M=megohms).
 2. Capacitor values are in microfarads (p=picofarads).
 3. △Parts marked with this sign are safety critical components. They must always be replaced with identical components-refer to the appropriate parts list and ensure exact replacement.

注意
 1. 抵抗の単位はΩ (k=kΩ, M=MΩ) です。
 2. コンデンサの単位はμF (p=pF) です。
 3. △マークのある部品は安全規格重要部品です。交換するときは必ずティアック指定の部品を使用してください。

AD-600

Compact Disc Multi Player/Reverse Cassette Deck

2nd Issue; October 2000

TEAC SCHEMATIC DIAGRAM AD-600 TAPE PCB

1 2 3 4 5 6 7 8

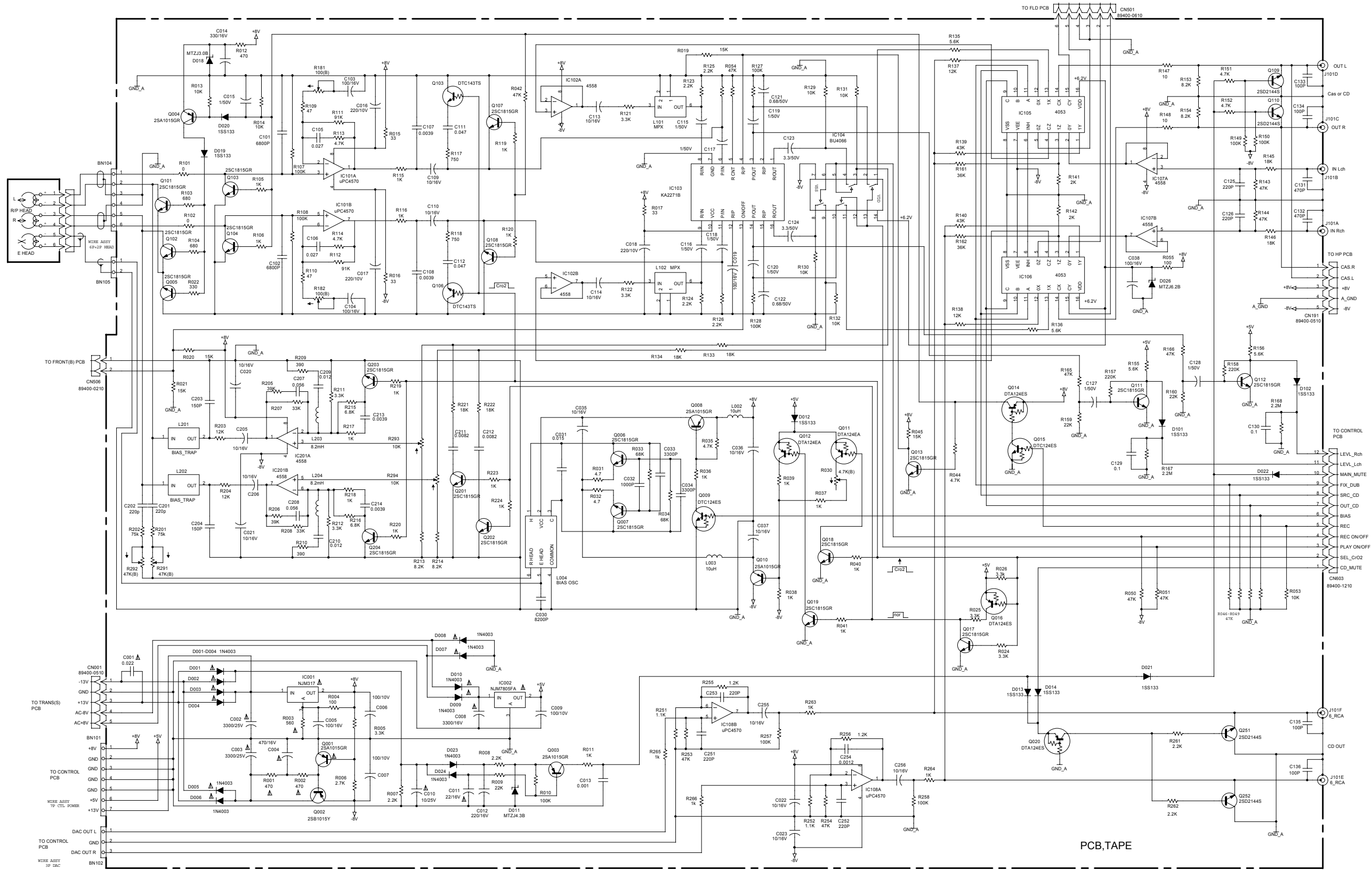
A

B

C

D

E



INSTRUCTIONS FOR SERVICE PERSONNEL
BEFORE RETURNING APPLIANCE TO THE CUSTOMER, MAKE LEAKAGE-CURRENT OR RESISTANCE MEASUREMENTS TO DETERMINE THAT EXPOSED PARTS ARE ACCEPTABLY INSULATED FROM THE SUPPLY CIRCUIT.

NOTES:
 1. Resistor values are in ohms (k=kilo-ohms, M=megohms).
 2. Capacitor values are in microfarads (p=picofarads).
 3. Δ Parts marked with this sign are safety critical components.
 They must always be replaced with identical components-refer to the appropriate parts list and ensure exact replacement.

注意
 1. 抵抗の単位は Ω (k=k Ω , M=M Ω) です。
 2. コンデンサの単位は μF (p=pF) です。
 3. Δ マークのある部品は安全規格重要部品です。
 交換するときには必ずテック指定の部品を使用してください。

AD-600

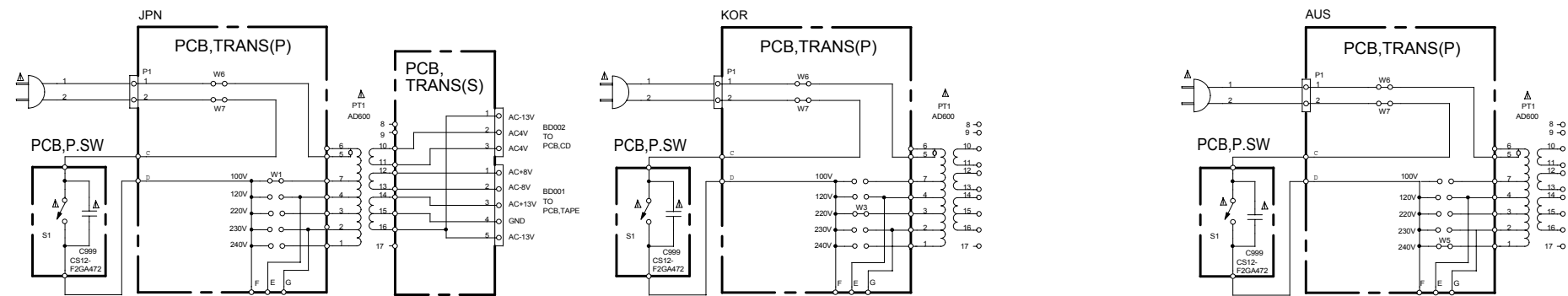
Compact Disc Multi Player/Reverse Cassette Deck

2nd Issue; October 2000

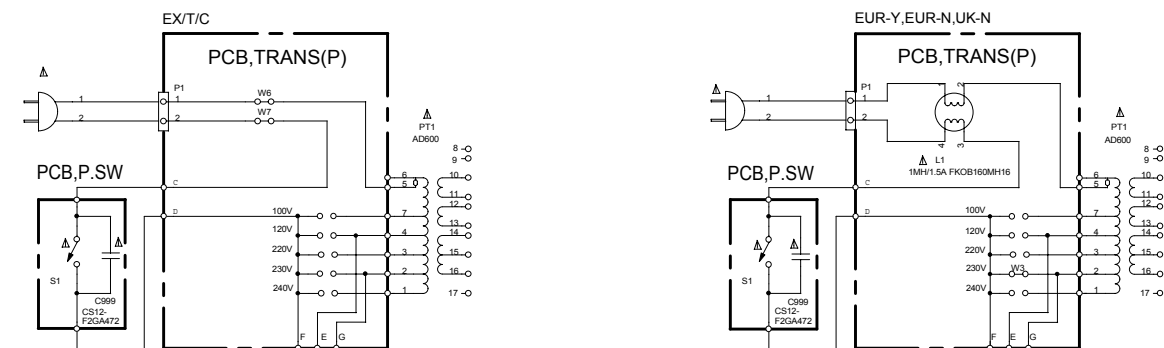
TEAC SCHEMATIC DIAGRAM AD-600 TRANS (P) PCB, TRANS (S) PCB, P SW PCB, V SELECT PCB, HP PCB

1 2 3 4 5 6 7 8

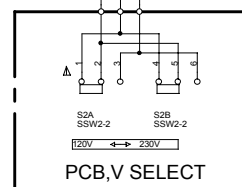
A



B

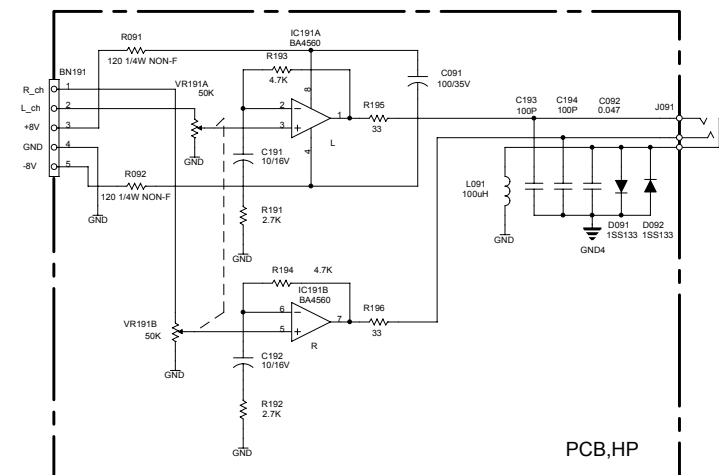


C



D

E



INSTRUCTIONS FOR SERVICE PERSONNEL
BEFORE RETURNING APPLIANCE TO THE CUSTOMER, MAKE LEAKAGE-CURRENT OR RESISTANCE MEASUREMENTS TO DETERMINE THAT EXPOSED PARTS ARE ACCEPTABLY INSULATED FROM THE SUPPLY CIRCUIT.

NOTES:
 1. Resistor values are in ohms (k=kilo-ohms, M=Megohms).
 2. Capacitor values are in microfarads (p=picofarads).
 3. Δ Parts marked with this sign are safety critical components. They must always be replaced with identical components-refer to the appropriate parts list and ensure exact replacement.

注意
 1. 抵抗の単位は Ω (k=k Ω , M=M Ω) です。
 2. コンデンサの単位は μF (p=pF) です。
 3. Δ マークのある部品は安全規格重要部品です。交換するときは必ずテック指定の部品を使用してください。

AD-600

Compact Disc Multi Player/Reverse Cassette Deck
 2nd Issue; October 2000

CDP & C.DECK, AD-600

	LEVEL	Q'TY							REF NO.	PARTS NO.
		JPN	EX/T/C	KOR	EUR-N	EUR-Y	UK	AUS		
1	0	1								3Y0038700A
2	0		1							3Y0038713A
3	0			1						3Y0038737A
4	0				1					3Y0038740A
5	0					1				3Y0038741A
6	0						1			3Y0038750A
7	0							1		3Y0038760A
8	1	1								3Y0038800A
9	1		1							3Y0038813A
10	1			1						3Y0038837A
11	1				1					3Y0038840A
12	1					1				3Y0038841A
13	1						1			3Y0038850A
14	1							1		3Y0038860A
15	2	1								3Y0039200A
16	2		1							3Y0039213A
17	2			1						3Y0039237A
18	2				1					3Y0039240A
19	2					1				3Y0039240A
20	2						1			3Y0039250A
21	2							1		3Y0039260A
22	3	2	2	2	2	2	2	2	305	3B0000004A
23	3	2	2	2	2	2	2	2	31	3B0000808A
24	3	8	8	8	8	8	8	8	61	3B0000808A
25	3	3	3	3	3	3	3	3	62	3B0000808A
26	3	4	4	4	4	4	4	4	67	3B0000808A
27	3	2	2	2	2	2	2	2	76	3B0000808A
28	3	5	5	5	5	5	5	5	320	3B0000808A
29	3	4	4	4	4	4	4	4	325	3B0000808A
30	3	2	2	2	2	2	2	2	82	3B0000810A
31	3	2	2	2	2	2	2	2		3B0001306A
32	3	5	5	5	5	5	5	5	87	3B0001306A
33	3	4	4	4	4	4	4	4	118	3B0001306A
34	3	4	4	4	4	4	4	4		3B0001806A
35	3	2	2	2	2	2	2	2		3B0002308A
36	3		2						223	3B0004408A
37	3	4	4	4	4	4	4	4		3B0005408A
38	3	1	1	1	1	1	1	1	33	3B0005708A
39	3	4	4	4	4	4	4	4	45	3B0005708A
40	3	1	1	1	1	1	1	1	83	3B0005708A
41	3	2	2	2	2	2	2	2	117	3B0005708A
42	3	2	2	2	2	2	2	2		3B0005708A
43	3	2	2	2	2	2	2	2	132	3B0005708A
44	3	3	3	3	3	3	3	3	187	3B0005708A
45	3	4	4	4	4	4	4	4	202	3B0005708A
46	3	1	1	1	1	1	1	1	207	3B0005708A
47	3	5	5	5	5	5	5	5	218	3B0005708A
48	3	1	1	1	1	1	1	1	220	3B0005708A
49	3	1	1	1	1	1	1	1	300	3B0005708B
50	3	3	3	3	3	3	3	3		3B0005708B
51	3	4	4	4	4	4	4	4	100	3B0007206A
52	3	3	3	3	3	3	3	3		3B0007300A
53	3	1								3E002120
54	3		1							3E009230
55	3			1						3E006330
56	3				1	1				3E015210
57	3						1			3E000350
58	3							1		3E000360
59	3	1	1	1	1	1	1	1		3E0019800A
60	3	1	1	1	1	1	1	1		3E010000
61	3	1	1	1	1	1	1	1		3E0138900A
62	3	1	1	1	1	1	1	1		3E0139200B
63	3	1	1	1	1	1	1	1	38	3M000870
64	3	2	2	2	2	2	2	2	204	3M000870
65	3	5	5	5	5	5	5	5		3M000870

CDP & C.DECK, AD-600

	LEVEL	Q'TY							REF NO.	PARTS NO.
		JPN	EX/T/C	KOR	EUR-N	EUR-Y	UK	AUS		
66	3	2	2	2	2	2	2	2		3M000870
67	3	1	1	1	1	1	1	1		3M000880
68	3	1	1	1	1	1	1	1		3M0010400A
69	3	1	1	1	1	1	1	1		3M0011100A
70	3	1	1	1	1	1	1	1		3M0011200A
71	3	1	1	1	1	1	1	1		3M001340
72	3	1	1	1	1	1	1	1		3M001350
73	3	1	1	1	1	1	1	1		3M0015000A
74	3	1	1	1	1	1	1	1		3M0025900A
75	3	1	1	1	1	1	1	1		3M0026000D
76	3	1	1	1	1	1	1	1		3M0026500B
77	3	1	1	1	1	1	1	1		3M0030500B
78	3	4	4	4	4	4	4	4		3M0047200A
79	3	1	1	1	1	1	1	1		3M0051600A
80	3	2	2	2	2	2	2	2		3M0060100A
81	3	1	1	1	1	1	1	1		3M0062400A
82	3	3	3	3	3	3	3	3		3M0062700A
83	3	1	1	1	1	1	1	1		3M0107800C
84	3	1	1	1	1	1	1	1		3M0107900A
85	3	1	1	1	1	1	1	1		3M0108000B
86	3	1	1	1	1	1	1	1		3M0108010B
87	3	1	1	1	1	1	1	1		3M0108020B
88	3	1	1	1	1	1	1	1		3M0108100A
89	3	1	1	1	1	1	1	1		3M0108200A
90	3	1	1	1	1	1	1	1		3M0108300A
91	3	1	1	1	1	1	1	1		3M0108400A
92	3	1	1	1	1	1	1	1		3M0108500A
93	3	3	3	3	3	3	3	3		3M0108600A
94	3	1	1	1	1	1	1	1		3M0108700A
95	3	1	1	1	1	1	1	1		3M0108800B
96	3	1	1	1	1	1	1	1		3M0108900A
97	3	1	1	1	1	1	1	1		3M0109000A
98	3	1	1	1	1	1	1	1		3M0109300A
99	3	1	1	1	1	1	1	1		3M0109500A
100	3	1								3M0109600A
101	3		1							3M0109610A
102	3			1	1	1	1	1		3M0109620A
103	3	1	1	1	1	1	1	1		3M0109700A
104	3	1	1	1	1	1	1	1		3M0109800A
105	3	2	2	2	2	2	2	2		3M0109900A
106	3	1	1	1	1	1	1	1		3M0110000B
107	3	1	1	1	1	1	1	1		3M0110100A
108	3	1	1	1	1	1	1	1		3M0110200A
109	3	1	1	1	1	1	1	1		3M0111500B
110	4	1	1	1	1	1	1	1	3	9A08686100
111	4	1	1	1	1	1	1	1	4	9A08686200
112	4	1	1	1	1	1	1	1	5	9A08686300
113	4	1	1	1	1	1	1	1	6	9A08686400
114	4	1	1	1	1	1	1	1	25	9A08686500
115	4	1	1	1	1	1	1	1	29	9A08686600
116	4	1	1	1	1	1	1	1	30	9A08686700
117	4	1	1	1	1	1	1	1	31	9A08686800
118	4	1	1	1	1	1	1	1	32	9A08686900
119	4	1	1	1	1	1	1	1	42	9A08687000
120	4	0	0	0	0	0	0	0		9A08752100
121	4	0	0	0	0	0	0	0		9A08781500
122	3	2	2	2	2	2	2	2		3M0115400A
123	3	1	1	1	1	1	1	1		3M0115500B
124	3	1	1	1	1	1	1	1		3M0115600A
125	3	1	1	1	1	1	1	1		3M0117700A
126	3	1	1	1	1	1	1	1		3M0118600A
127	2	1	1	1	1	1	1	1		3Y0039400A
128	3	1	1	1	1	1	1	1		3E0147600A
129	3	1	1	1	1	1	1	1		3M0010600A
130	3	1	1	1	1	1	1	1		3M0010700A

	LEVEL	Q'TY							REF NO.	PARTS NO.
		JPN	EX/T/C	KOR	EUR-N	EUR-Y	UK	AUS		
131	3	1	1	1	1	1	1	1		3M0029800A
132	3	1	1	1	1	1	1	1		3M0029900A
133	2	1	1	1	1	1	1	1		3Y0039500A
134	3	1	1	1	1	1	1	1		3M0111400A
135	4	3	3	3	3	3	3	3	1	9A08676300
136	4	1	1	1	1	1	1	1	2	9A08676400
137	4	1	1	1	1	1	1	1	3	9A08676500
138	4	1	1	1	1	1	1	1	4	9A08676600
139	4	3	3	3	3	3	3	3	5	9A08676700
140	4	1	1	1	1	1	1	1	6	9A08676800
141	4	2	2	2	2	2	2	2	7	9A08676900
142	4	1	1	1	1	1	1	1	8	9A08677000
143	4	1	1	1	1	1	1	1	9	9A08677100
144	4	1	1	1	1	1	1	1	10	9A08677200
145	4	3	3	3	3	3	3	3	11	9A08677300
146	4	1	1	1	1	1	1	1	12	9A08677400
147	4	6	6	6	6	6	6	6	13	9A08677500
148	4	1	1	1	1	1	1	1	14	9A08677600
149	4	1	1	1	1	1	1	1	15	9A08677700
150	4	2	2	2	2	2	2	2	16	9A08677800
151	4	1	1	1	1	1	1	1	17	9A08677900
152	4	3	3	3	3	3	3	3	18	9A08678000
153	4	3	3	3	3	3	3	3	19	9A08678100
154	4	1	1	1	1	1	1	1	20	9A08678200
155	4	4	4	4	4	4	4	4	21	9A08678300
156	4	1	1	1	1	1	1	1	22	9A08678400
157	4	1	1	1	1	1	1	1	23	9A08678500
158	4	1	1	1	1	1	1	1	24	9A08678600
159	4	1	1	1	1	1	1	1	25	9A08678700
160	4	1	1	1	1	1	1	1	26	9A08678800
161	4	1	1	1	1	1	1	1	27	9A08678900
162	4	1	1	1	1	1	1	1	28	9A08679000
163	4	3	3	3	3	3	3	3	29	9A08679100
164	4	1	1	1	1	1	1	1	30	9A08679200
165	4	1	1	1	1	1	1	1	31	9A08679300
166	4	1	1	1	1	1	1	1	32	9A08679400
167	4	1	1	1	1	1	1	1	33	9A08679500
168	4	1	1	1	1	1	1	1	34	9A08679600
169	4	1	1	1	1	1	1	1	35	9A08679700
170	4	3	3	3	3	3	3	3	36	9A08679800
171	4	3	3	3	3	3	3	3	37	9A08679900
172	4	1	1	1	1	1	1	1	38	9A08680000
173	4	1	1	1	1	1	1	1	39	9A08680100
174	4	1	1	1	1	1	1	1	40	9A08680200
175	4	1	1	1	1	1	1	1	41	9A08680300
176	4	1	1	1	1	1	1	1	42	9A08680400
177	4	3	3	3	3	3	3	3	43	9A08680500
178	4	1	1	1	1	1	1	1	44	9A08680600
179	4	1	1	1	1	1	1	1	45	9A08680700
180	4	1	1	1	1	1	1	1	46	9A08680800
181	4	1	1	1	1	1	1	1	47	9A08680900
182	4	1	1	1	1	1	1	1	48	9A08681000
183	4	1	1	1	1	1	1	1	49	9A08681100
184	4	1	1	1	1	1	1	1	50	9A08681200
185	4	1	1	1	1	1	1	1	51	9A08681400
186	4	1	1	1	1	1	1	1	52	9A08681500
187	4	1	1	1	1	1	1	1	53	9A08681600
188	4	2	2	2	2	2	2	2	54	9A08681700
189	4	2	2	2	2	2	2	2	55	9A08681800
190	4	2	2	2	2	2	2	2	56	9A08681900
191	4	1	1	1	1	1	1	1	57	9A08682000
192	4	3	3	3	3	3	3	3	58	9A08682100
193	4	1	1	1	1	1	1	1	59	9A08682200
194	4	1	1	1	1	1	1	1	60	9A08682300
195	4	1	1	1	1	1	1	1	61	9A08682400

CDP & C.DECK, AD-600

	LEVEL	Q'TY							REF NO.	PARTS NO.
		JPN	EX/T/C	KOR	EUR-N	EUR-Y	UK	AUS		
196	4	1	1	1	1	1	1	1	62	9A08682500
197	4	1	1	1	1	1	1	1	63	9A08682600
198	4	15	15	15	15	15	15	15	64	9A08682700
199	4	8	8	8	8	8	8	8	65	9A07827800
200	4	2	2	2	2	2	2	2	66	9A07825200
201	4	1	1	1	1	1	1	1	67	9A08682800
202	4	3	3	3	3	3	3	3	68	9A08682900
203	4	1	1	1	1	1	1	1	69	9A08683000
204	4	1	1	1	1	1	1	1	70	9A08683100
205	4	1	1	1	1	1	1	1	71	9A08683200
206	4	1	1	1	1	1	1	1	72	9A08683300
207	4	1	1	1	1	1	1	1	73	9A08683400
208	4	1	1	1	1	1	1	1	74	9A08683500
209	4	1	1	1	1	1	1	1	75	9A08683600
210	4	1	1	1	1	1	1	1	76	9A08683700
211	4	2	2	2	2	2	2	2	77	9A07825700
212	4	2	2	2	2	2	2	2	78	9A07825800
213	4	1	1	1	1	1	1	1	79	9A08683800
214	4	1	1	1	1	1	1	1	80	9A08683900
215	4	1	1	1	1	1	1	1	81	9A08684000
216	4	1	1	1	1	1	1	1	82	9A08684100
217	4	2	2	2	2	2	2	2	83	9A08684200
218	4	2	2	2	2	2	2	2	84	9A08684300
219	4	4	4	4	4	4	4	4	85	9A08684400
220	4	1	1	1	1	1	1	1	86	9A08684500
221	4	1	1	1	1	1	1	1	88	9A07825000
222	4	1	1	1	1	1	1	1	89	9A07746000
223	4	4	4	4	4	4	4	4	90	9A07827900
224	4	18	18	18	18	18	18	18	91	9A08684600
225	4	7	7	7	7	7	7	7	92	9A08684700
226	4	4	4	4	4	4	4	4	93	9A08684800
227	4	3	3	3	3	3	3	3	94	9A08684900
228	4	3	3	3	3	3	3	3	95	9A08685000
229	4	1	1	1	1	1	1	1	96	9A08685100
230	4	1	1	1	1	1	1	1	97	9A08685200
231	4	1	1	1	1	1	1	1	98	9A08685300
232	4	1	1	1	1	1	1	1	99	9A08685400
233	4	1	1	1	1	1	1	1	100	9A08685500
234	4	1	1	1	1	1	1	1	101	9A07828000
235	4	2	2	2	2	2	2	2	102	9A08685600
236	3	1	1	1	1	1	1	1		3E0139000A
237	3	1	1	1	1	1	1	1		3E0139100A
238	3	1	1	1	1	1	1	1		3M0115700A
239	3	1	1	1	1	1	1	1		3M0116500A
240	2	1								3Y0039300A
241	2		1							3Y0039313A
242	2			1						3Y0039337A
243	2				1	1	1			3Y0039340A
244	2							1		3Y0039360A
245	3	1								3E9525400B
246	3		1							3E9525413B
247	3			1						3E9525437B
248	3				1	1	1			3E9525440B
249	3							1		3E9525460B
250	4	0	0	0	0	0	0	0		3EZ525400A
251	4	1	1	1	1	1	1	1		3E9025400D
252	5	1	1	1	1	1	1	1		3E9025500B
253	5	1	1	1	1	1	1	1		3E9025600A
254	5	1	1	1	1	1	1	1		3E9025700B
255	5	1	1	1	1	1	1	1		3E9025800A
256	5	1	1	1	1	1	1	1		3E9025900A
257	5	1	1	1	1	1	1	1		3E9026000A
258	5	1	1	1	1	1	1	1		3E9026100A
259	5	1	1	1	1	1	1	1		3E9026200A
260	5	1	1	1	1	1	1	1		3E9026300A

	LEVEL	Q'TY							REF NO.	PARTS NO.
		JPN	EX/T/C	KOR	EUR-N	EUR-Y	UK	AUS		
261	5	1	1	1	1	1	1	1		3E9026400A
262	5	1	1	1	1	1	1	1		3E9026500A
263	5	1	1	1	1	1	1	1		3E9026600A
264	5	1	1	1	1	1	1	1		3E9026700A
265	5	1	1	1	1	1	1	1		3E9028400A
266	4	1	1	1	1	1	1	1		3E9525500B
267	5	1	1	1	1	1	1	1		3EZ525500B
268		1	1	1	1	1	1	1		3E9025500B
269		1	1	1	1	1	1	1	D602	3S003591
270		1	1	1	1	1	1	1	D603	3S000681
271		1	1	1	1	1	1	1	D604	3S000241
272		1	1	1	1	1	1	1	D606	3S000681
273		1	1	1	1	1	1	1	D701	3S000241
274		2	2	2	2	2	2	2	D702, D703	3S001891
275		1	1	1	1	1	1	1	D704	3S003441
276		1	1	1	1	1	1	1	D705	3S000681
277		2	2	2	2	2	2	2	D801, D802	3S003281
278		1	1	1	1	1	1	1	R601	3R000761
279		1	1	1	1	1	1	1	R602	3R000481
280		1	1	1	1	1	1	1	R604	3R000961
281		1	1	1	1	1	1	1	R605	3R001001
282		1	1	1	1	1	1	1	R606	3R001121
283		1	1	1	1	1	1	1	R608	3R001161
284		1	1	1	1	1	1	1	R611	3R001121
285		1	1	1	1	1	1	1	R612	3R000961
286		2	2	2	2	2	2	2	R616, R617	3R000961
287		1	1	1	1	1	1	1	R618	3R000841
288		1	1	1	1	1	1	1	R619	3R000561
289		1	1	1	1	1	1	1	R620	3R000911
290		1	1	1	1	1	1	1	R621	3R000961
291		3	3	3	3	3	3	3	R627- R629	3R000961
292		2	2	2	2	2	2	2	R627, R648	3R001201
293		4	4	4	4	4	4	4	R630- R633	3R000881
294		1	1	1	1	1	1	1	R635	3R000881
295		2	2	2	2	2	2	2	R638, R639	3R002191
296		2	2	2	2	2	2	2	R640, R642	3R000721
297		2	2	2	2	2	2	2	R641, R643	3R000881
298		1	1	1	1	1	1	1	R644	3R000961
299		2	2	2	2	2	2	2	R645, R646	3R003421
300		3	3	3	3	3	3	3	R649- R651	3R000961
301		1	1	1	1	1	1	1	R700	3R000881
302		1	1	1	1	1	1	1	R701	3R001001
303		4	4	4	4	4	4	4	R702- R705	3R003421
304		1	1	1	1	1	1	1	R706	3R001001
305		1	1	1	1	1	1	1	R707	3R000471
306		1	1	1	1	1	1	1	R708	3R001951
307		1	1	1	1	1	1	1	R709	3R000721
308		1	1	1	1	1	1	1	R711	3R000891
309		1	1	1	1	1	1	1	R712	3R001241
310		1	1	1	1	1	1	1	R713	3R000881
311		1	1	1	1	1	1	1	R714	3R001241
312		1	1	1	1	1	1	1	R715	3R000881
313		1	1	1	1	1	1	1	R718	3R001121
314		1	1	1	1	1	1	1	R719	3R000961
315		1	1	1	1	1	1	1	R721	3R000881
316		1	1	1	1	1	1	1	R722	3R000961
317		1	1	1	1	1	1	1	R723	3R000781
318		1	1	1	1	1	1	1	R724	3R001081
319		1	1	1	1	1	1	1	R725	3R001221
320		2	2	2	2	2	2	2	R726, R728	3R001081
321		1	1	1	1	1	1	1	R729	3R000961
322		1	1	1	1	1	1	1	R730	3R001201
323		1	1	1	1	1	1	1	R731	3R000981
324		2	2	2	2	2	2	2	R732, R733	3R000841
325		1	1	1	1	1	1	1	R734	3R001441

	LEVEL								Q'TY	REF NO.	PARTS NO.
	JPN	EX/T/C	KOR	EUR-N	EUR-Y	UK	AUS				
326		1	1	1	1	1	1	1	R735	3R000881	
327		1	1	1	1	1	1	1	R736	3R000361	
328		1	1	1	1	1	1	1	R737	3R001441	
329		1	1	1	1	1	1	1	R738	3R000801	
330		1	1	1	1	1	1	1	R739	3R000961	
331		1	1	1	1	1	1	1	R740	3R001081	
332		1	1	1	1	1	1	1	R741	3R001041	
333		1	1	1	1	1	1	1	R742	3R000961	
334		1	1	1	1	1	1	1	R743	3R001171	
335		2	2	2	2	2	2	2	R744, R745	3R001001	
336		3	3	3	3	3	3	3	R746- R748	3R000931	
337		2	2	2	2	2	2	2	R749, R750	3R001021	
338		1	1	1	1	1	1	1	R751	3R000931	
339		1	1	1	1	1	1	1	R752	3R000881	
340		2	2	2	2	2	2	2	R753, R754	3R001021	
341		1	1	1	1	1	1	1	R755	3R000881	
342		1	1	1	1	1	1	1	R756	3R000801	
343		6	6	6	6	6	6	6	R761- R766	3R000981	
344		2	2	2	2	2	2	2	R767, R768	3R001201	
345		1	1	1	1	1	1	1	R778	3R000641	
346		1	1	1	1	1	1	1	R780	3R000881	
347		1	1	1	1	1	1	1	R782	3R001121	
348		7	7	7	7	7	7	7	R783- R789	3R001201	
349		1	1	1	1	1	1	1	R790	3R000961	
350		1	1	1	1	1	1	1	R791	3R000941	
351		1	1	1	1	1	1	1	R794	3R000891	
352		1	1	1	1	1	1	1	R795	3R001121	
353		2	2	2	2	2	2	2	R796, R797	3R001041	
354		1	1	1	1	1	1	1	R798	3R000891	
355		1	1	1	1	1	1	1	R799	3R000561	
356		1	1	1	1	1	1	1	R800	3R000961	
357		1	1	1	1	1	1	1	R801	3R001091	
358		1	1	1	1	1	1	1	R802	3R000961	
359		1	1	1	1	1	1	1	R805	3R001361	
360		1	1	1	1	1	1	1	R807	3R000821	
361		1	1	1	1	1	1	1	R808	3R001281	
362		1	1	1	1	1	1	1	R809	3R000961	
363		2	2	2	2	2	2	2	R810, R812	3R001121	
364		1	1	1	1	1	1	1	R813	3R000641	
365		1	1	1	1	1	1	1	R818	3R003481	
366		1	1	1	1	1	1	1	R819	3R001201	
367	5	1	1	1	1	1	1	1	BN603	3E0138400A	
368	5	1	1	1	1	1	1	1	BN691	3E0150900A	
369	5	1	1	1	1	1	1	1	BN692	3E0181900A	
370	5	1	1	1	1	1	1	1	C601	3C000580	
371	5	1	1	1	1	1	1	1	C602	3C000790	
372	5	1	1	1	1	1	1	1	C603	3C000270	
373	5	1	1	1	1	1	1	1	C604	3C000360	
374	5	1	1	1	1	1	1	1	C605	3C000180	
375	5	1	1	1	1	1	1	1	C606	3C000560	
376	5	2	2	2	2	2	2	2	C607, C608	3C011640	
377	5	1	1	1	1	1	1	1	C609	3C011590	
378	5	1	1	1	1	1	1	1	C610	3C011640	
379	5	1	1	1	1	1	1	1	C611	3C011590	
380	5	1	1	1	1	1	1	1	C612	3C000270	
381	5	1	1	1	1	1	1	1	C613	3C000360	
382	5	2	2	2	2	2	2	2	C614, C615	3C011620	
383	5	1	1	1	1	1	1	1	C616	3C011370	
384	5	1	1	1	1	1	1	1	C650	3C010780	
385	5	1	1	1	1	1	1	1	C701	3C000000	
386	5	1	1	1	1	1	1	1	C702	3C000560	
387	5	1	1	1	1	1	1	1	C703	3C011640	
388	5	1	1	1	1	1	1	1	C704	3C000680	
389	5	1	1	1	1	1	1	1	C705	3C011640	
390	5	2	2	2	2	2	2	2	C706, C707	3C000560	

	LEVEL								Q'TY	REF NO.	PARTS NO.
	JPN	EX/T/C	KOR	EUR-N	EUR-Y	UK	AUS				
391	5	2	2	2	2	2	2	2	C708, C709	3C011640	
392	5	1	1	1	1	1	1	1	C710	3C000560	
393	5	1	1	1	1	1	1	1	C711	3C011640	
394	5	1	1	1	1	1	1	1	C712	3C000560	
395	5	2	2	2	2	2	2	2	C713, C714	3C010860	
396	5	1	1	1	1	1	1	1	C715	3C011640	
397	5	1	1	1	1	1	1	1	C716	3C011620	
398	5	1	1	1	1	1	1	1	C717	3C011640	
399	5	1	1	1	1	1	1	1	C718	3C000090	
400	5	1	1	1	1	1	1	1	C719	3C003260	
401	5	1	1	1	1	1	1	1	C720	3C003180	
402	5	1	1	1	1	1	1	1	C721	3C003060	
403	5	1	1	1	1	1	1	1	C722	3C003420	
404	5	1	1	1	1	1	1	1	C723	3C010860	
405	5	1	1	1	1	1	1	1	C724	3C000210	
406	5	1	1	1	1	1	1	1	C725	3C000760	
407	5	2	2	2	2	2	2	2	C726, C727	3C011640	
408	5	1	1	1	1	1	1	1	C729	3C011640	
409	5	2	2	2	2	2	2	2	C730, C731	3C003420	
410	5	2	2	2	2	2	2	2	C732, C733	3C003340	
411	5	2	2	2	2	2	2	2	C734, C735	3C010950	
412	5	2	2	2	2	2	2	2	C736, C737	3C003100	
413	5	2	2	2	2	2	2	2	C738, C739	3C000560	
414	5	1	1	1	1	1	1	1	C740	3C003200	
415	5	1	1	1	1	1	1	1	C741	3C010950	
416	5	1	1	1	1	1	1	1	C742	3C003340	
417	5	1	1	1	1	1	1	1	C743	3C000760	
418	5	2	2	2	2	2	2	2	C744, C745	3C003420	
419	5	1	1	1	1	1	1	1	C746	3C011370	
420	5	1	1	1	1	1	1	1	C747	3C011640	
421	5	1	1	1	1	1	1	1	C748	3C011370	
422	5	1	1	1	1	1	1	1	C749	3C000560	
423	5	2	2	2	2	2	2	2	C751, C752	3C010840	
424	5	2	2	2	2	2	2	2	C753, C754	3C010950	
425	5	2	2	2	2	2	2	2	C755, C756	3C000270	
426	5	2	2	2	2	2	2	2	C760, C761	3C011620	
427	5	1	1	1	1	1	1	1	C767	3C000560	
428	5	2	2	2	2	2	2	2	C768, C780	3C011640	
429	5	1	1	1	1	1	1	1	C801	3C000680	
430	5	1	1	1	1	1	1	1	C802	3C000420	
431	5	2	2	2	2	2	2	2	C805, C806	3C003260	
432	5	1	1	1	1	1	1	1	C807	3C010500	
433	5	2	2	2	2	2	2	2	C808, C809	3C010400	
434	5	1	1	1	1	1	1	1	C810	3C003020	
435	5	1	1	1	1	1	1	1	C811	3C003340	
436	5	1	1	1	1	1	1	1	C812	3C011640	
437	5	2	2	2	2	2	2	2	C813, C814	3C000180	
438	5	1	1	1	1	1	1	1	C815	3C011640	
439	5	2	2	2	2	2	2	2	C816, C817	3C010860	
440	5	1	1	1	1	1	1	1	C818	3C005850	
441	5	1	1	1	1	1	1	1	CN002	3E010350	
442	5	1	1	1	1	1	1	1	CN101	3E010390	
443	5	1	1	1	1	1	1	1	CN102	3E001150	
444	5	1	1	1	1	1	1	1	CN505	3E010400	
445	5	1	1	1	1	1	1	1	CN508	3E010340	
446	5	1	1	1	1	1	1	1	CN602	3E014220	
447	5	1	1	1	1	1	1	1	CN701	3E010350	
448	5	1	1	1	1	1	1	1	CN702	3E010380	
449	5	1	1	1	1	1	1	1	CN703	3E014200	
450	5	1	1	1	1	1	1	1	CN704	3E014210	
451	5	2	2	2	2	2	2	2	D601, D605	3S000031	
452	5	2	2	2	2	2	2	2	D607, D608	3S000031	
453	5	1	1	1	1	1	1	1	GND2	3E0043200A	
454	5	1	1	1	1	1	1	1	IC601	S00419000B	
455	5	1	1	1	1	1	1	1	IC701	3S003300	

CDP & C.DECK, AD-600

	LEVEL	Q'TY							REF NO.	PARTS NO.
		JPN	EX/T/C	KOR	EUR-N	EUR-Y	UK	AUS		
456	5	1	1	1	1	1	1	1	IC702	3S003310
457	5	1	1	1	1	1	1	1	IC703	3S001590
458	5	2	2	2	2	2	2	2	IC704 ,705	3S000260
459	5	2	2	2	2	2	2	2	IC706 ,707	3S003600
460	5	1	1	1	1	1	1	1	IC708	3S002550
461	5	1	1	1	1	1	1	1	IC709	3S001340
462	5	1	1	1	1	1	1	1	IC710	3S001620
463	5	1	1	1	1	1	1	1	L701	3E003711
464	5	1	1	1	1	1	1	1	Q601	3S000020
465	5	1	1	1	1	1	1	1	Q603	3S000000
466	5	2	2	2	2	2	2	2	Q604, Q605	3S000291
467	5	2	2	2	2	2	2	2	Q606, Q607	3S003330
468	5	2	2	2	2	2	2	2	Q608, Q609	3S000291
469	5	2	2	2	2	2	2	2	Q610, Q611	3S000301
470	5	2	2	2	2	2	2	2	Q612, Q614	3S000291
471	5	1	1	1	1	1	1	1	Q701	3S000020
472	5	1	1	1	1	1	1	1	Q703	3S000741
473	5	2	2	2	2	2	2	2	Q705	3S000291
474	5	1	1	1	1	1	1	1	Q751	3S002510
475	5	2	2	2	2	2	2	2	Q752, Q753	3S000291
476	5	1	1	1	1	1	1	1	Q801	3S000000
477	5	1	1	1	1	1	1	1	R652	3R004580
478	5	1	1	1	1	1	1	1	R758	3R004810
479	5	1	1	1	1	1	1	1	R811	3R004590
480	5	4	4	4	4	4	4	4	R814- R817	3R007640
481	5	1	1	1	1	1	1	1	X601	3E011740
482	5	1	1	1	1	1	1	1	X701	3E013070
483	4	1	1	1	1	1	1	1		3E9525600A
484	5	1	1	1	1	1	1	1		3EZ525600A
485		1	1	1	1	1	1	1		3E9025600A
486		2	2	2	2	2	2	2	D501, D502	3S000241
487		1	1	1	1	1	1	1	R501	3R000701
488		1	1	1	1	1	1	1	R502	3R000721
489		1	1	1	1	1	1	1	R503	3R000761
490		1	1	1	1	1	1	1	R504	3R000821
491		1	1	1	1	1	1	1	R506	3R000701
492		1	1	1	1	1	1	1	R507	3R000721
493		1	1	1	1	1	1	1	R508	3R000761
494		1	1	1	1	1	1	1	R509	3R000821
495		1	1	1	1	1	1	1	R511	3R000701
496		1	1	1	1	1	1	1	R512	3R000721
497		1	1	1	1	1	1	1	R513	3R000761
498		1	1	1	1	1	1	1	R514	3R000821
499		1	1	1	1	1	1	1	R515	3R000881
500		1	1	1	1	1	1	1	R516	3R000961
501		1	1	1	1	1	1	1	R522	3R000701
502		1	1	1	1	1	1	1	R523	3R000721
503		1	1	1	1	1	1	1	R524	3R000761
504		1	1	1	1	1	1	1	R531	3R000241
505		1	1	1	1	1	1	1	R532	3R000561
506	5	1	1	1	1	1	1	1		3M0062200A
507	5	1	1	1	1	1	1	1		3M0109200A
508	5	1	1	1	1	1	1	1		M01270300A
509	5	1	1	1	1	1	1	1	BN501	3E0137600A
510	5	1	1	1	1	1	1	1	C501	3C010820
511	5	1	1	1	1	1	1	1	C502	3C000360
512	5	1	1	1	1	1	1	1	C503	3C011620
513	5	1	1	1	1	1	1	1	CN504	3E001290
514	5	1	1	1	1	1	1	1	CN507	3E010360
515	5	1	1	1	1	1	1	1	FL501	3E0131800A
516	5	15	15	15	15	15	15	15	S501- S515	3E002070
517	5	3	3	3	3	3	3	3	S521- S523	3E002070
518	5	1	1	1	1	1	1	1	S527	3E002070
519	5	1	1	1	1	1	1	1	U501	E0062220
520	5	1	1	1	1	1	1	1	VR503	3R004890

	LEVEL	Q'TY							REF NO.	PARTS NO.
		JPN	EX/T/C	KOR	EUR-N	EUR-Y	UK	AUS		
521	4	1	1	1	1	1	1	1		3E9525700B
522	5	1	1	1	1	1	1	1		3EZ525700B
523		1	1	1	1	1	1	1		3E9025700B
524		1	1	1	1	1	1	1	R517	3R000701
525		1	1	1	1	1	1	1	R518	3R000721
526		1	1	1	1	1	1	1	R519	3R000761
527		1	1	1	1	1	1	1	R520	3R000821
528		1	1	1	1	1	1	1	R521	3R000881
529		2	2	2	2	2	2	2	R528, R529	3R001041
530		1	1	1	1	1	1	1	R530	3R000691
531	5	5	5	5	5	5	5	5	S516- S520	3E002070
532	5	1	1	1	1	1	1	1	BN504	3E0137700A
533	5	1	1	1	1	1	1	1	BN505	3E0137800A
534	5	1	1	1	1	1	1	1		3M0068404A
535	5	1	1	1	1	1	1	1	VR501	3R003980
536	5	1	1	1	1	1	1	1	VR502	3R003980
537	5	1	1	1	1	1	1	1	LED50 1	3S003480
538	4	1	1	1	1	1	1	1		3E9525800A
539	5	1	1	1	1	1	1	1		3EZ525800A
540		1	1	1	1	1	1	1		3E9025800A
541		2	2	2	2	2	2	2	D503, D504	3S000241
542		1	1	1	1	1	1	1	R510	3R000881
543		1	1	1	1	1	1	1	W323	3R003421
544	5	1	1	1	1	1	1	1	BN507	3E0137900B
545	5	1	1	1	1	1	1	1	BN506	3E0138000A
546	5	2	2	2	2	2	2	2	S528, S529	3E014560
547	5	1	1	1	1	1	1	1	S531	3E014560
548	5	1	1	1	1	1	1	1	S530	3E014570
549	4	1	1	1	1	1	1	1		3E9525900A
550	5	1	1	1	1	1	1	1		3EZ525900A
551		1	1	1	1	1	1	1		3E9025900A
552		1	1	1	1	1	1	1	R526	3R000881
553		1	1	1	1	1	1	1	R527	3R000961
554	5	3	3	3	3	3	3	3	S524- S526	3E002070
555	5	1	1	1	1	1	1	1	BN508	3E0138100A
556	4	1	1							3E9526000A
557	5	1	1							3EZ526000A
558		1	1							3E9026000A
559	5	1	1						BN701	3E0138200A
560	5	1	1						U701	3S002290
561	4	1	1	1	1	1	1	1		3E9526300A
562	5	1	1	1	1	1	1	1		3EZ526300A
563		1	1	1	1	1	1	1		3E9026300A
564		2	2	2	2	2	2	2	D091, D092	3S000241
565		2	2	2	2	2	2	2	R191, R192	3R000821
566		2	2	2	2	2	2	2	R193, R194	3R000881
567		2	2	2	2	2	2	2	R195, R196	3R000361
568		1	1	1	1	1	1	1	W348	3R003421
569	5	1	1	1	1	1	1	1	BN191	3E0138500A
570	5	1	1	1	1	1	1	1	C091	3C000690
571	5	1	1	1	1	1	1	1	C092	3C011620
572	5	2	2	2	2	2	2	2	C191, C192	3C000360
573	5	2	2	2	2	2	2	2	C193, C194	3C010820
574	5	1	1	1	1	1	1	1	GND4	3E0043200A
575	5	1	1	1	1	1	1	1	IC191	3S000840
576	5	1	1	1	1	1	1	1	J091	3E002140
577	5	1	1	1	1	1	1	1	L091	3E003721
578	5	2	2	2	2	2	2	2	R091, R092	3R007630
579	5	1	1	1	1	1	1	1	VR191	3R003920
580	4	1	1							3E9526400A
581	4			1						3E9526437A
582	4				1	1	1			3E9526440A
583	4							1		3E9526460A
584	5	1	1	1	1	1	1	1	P1	3E002170
585	5				1	1	1		L1	3E004290

CDP & C.DECK, AD-600

	LEVEL	Q'TY							REF NO.	PARTS NO.
		JPN	EX/T/C	KOR	EUR-N	EUR-Y	UK	AUS		
586	5	1	1	1	1	1	1	1		3E9026400A
587	5	1	1						W1	3R003481
588	5			1					W3	3R003481
589	5				1	1	1		W4	3R003481
590	5							1	W5	3R003481
591	5	2	2	2				2	W6,W7	3R003481
592	4	1	1	1	1	1	1	1		3E9526500A
593	5	1	1	1	1	1	1	1	BN001	3E0138600A
594	5	1	1	1	1	1	1	1	BN002	3E0138700A
595	5	1	1	1	1	1	1	1		3E9026500A
596	4	1	1	1	1	1	1	1		3E9526600A
597	5	1	1	1	1	1	1	1	S1	3E003770
598	5	1	1	1	1	1	1	1	C999	3E004300
599	5	2	2	2	2	2	2	2		3E0143800A
600	5	1	1	1	1	1	1	1		3E9026600A
601	4	1	1	1	1	1	1	1		3E9528400A
602	5	2	2	2	2	2	2	2	C691, C692	3C000180
603	5	1	1	1	1	1	1	1	CN691	3E001430
604	5	1	1	1	1	1	1	1		3E9028400A
605	5	1	1	1	1	1	1	1	IC691	3S002170
606	3	1	1	1	1	1	1	1		3E9526200A
607	4	1	1	1	1	1	1	1		3EZ526200A
608	5	1	1	1	1	1	1	1		3E9026200A
609	5	1	1	1	1	1	1	1	D011	3S000671
610	5	3	3	3	3	3	3	3	D012- D014	3S000241
611	5	1	1	1	1	1	1	1	D018	3S001581
612	5	4	4	4	4	4	4	4	D019- D022	3S000241
613	5	1	1	1	1	1	1	1	D026	3S001891
614	5	2	2	2	2	2	2	2	D101, D102	3S000241
615	5	2	2	2	2	2	2	2	R001, R002	3R000641
616	5	1	1	1	1	1	1	1	R003	3R000661
617	5	1	1	1	1	1	1	1	R004	3R000481
618	5	1	1	1	1	1	1	1	R005	3R000841
619	5	1	1	1	1	1	1	1	R006	3R000821
620	5	2	2	2	2	2	2	2	R007, R008	3R000801
621	5	1	1	1	1	1	1	1	R009	3R001041
622	5	1	1	1	1	1	1	1	R010	3R001201
623	5	1	1	1	1	1	1	1	R011	3R000721
624	5	1	1	1	1	1	1	1	R012	3R000641
625	5	5	5	5	5	5	5	5	R013- R017	3R000961
626	5	3	3	3	3	3	3	3	R019- R021	3R001001
627	5	1	1	1	1	1	1	1	R022	3R000601
628	5	3	3	3	3	3	3	3	R024- R026	3R000841
629	5	2	2	2	2	2	2	2	R031, R032	3R000161
630	5	2	2	2	2	2	2	2	R033, R034	3R001161
631	5	1	1	1	1	1	1	1	R035	3R000881
632	5	6	6	6	6	6	6	6	R036- R041	3R000721
633	5	1	1	1	1	1	1	1	R042	3R001121
634	5	1	1	1	1	1	1	1	R044	3R000881
635	5	1	1	1	1	1	1	1	R045	3R001001
636	5	6	6	6	6	6	6	6	R046- R051	3R001121
637	5	1	1	1	1	1	1	1	R053	3R000961
638	5	1	1	1	1	1	1	1	R054	3R001121
639	5	1	1	1	1	1	1	1	R055	3R000481
640	5	2	2	2	2	2	2	2	R101, R102	3R003421
641	5	2	2	2	2	2	2	2	R103, R104	3R000681
642	5	2	2	2	2	2	2	2	R105, R106	3R000721
643	5	2	2	2	2	2	2	2	R107, R108	3R001201
644	5	2	2	2	2	2	2	2	R109, R110	3R000401
645	5	2	2	2	2	2	2	2	R111, R112	3R001191
646	5	2	2	2	2	2	2	2	R113, R114	3R000881
647	5	2	2	2	2	2	2	2	R115, R116	3R000721
648	5	2	2	2	2	2	2	2	R117, R118	3R000691
649	5	2	2	2	2	2	2	2	R119, R120	3R000721
650	5	2	2	2	2	2	2	2	R121, R122	3R000841

	LEVEL								Q'TY	REF NO.	PARTS NO.
	JPN	EX/T/C	KOR	EUR-N	EUR-Y	UK	AUS				
651	5	4	4	4	4	4	4	4	R123- R126	3R000801	
652	5	2	2	2	2	2	2	2	R127, R128	3R001201	
653	5	4	4	4	4	4	4	4	R129- R132	3R000961	
654	5	2	2	2	2	2	2	2	R133, R134	3R001021	
655	5	2	2	2	2	2	2	2	R135, R136	3R000901	
656	5	2	2	2	2	2	2	2	R137, R138	3R000981	
657	5	2	2	2	2	2	2	2	R139, R140	3R001111	
658	5	2	2	2	2	2	2	2	R141, R142	3R000791	
659	5	2	2	2	2	2	2	2	R143, R144	3R001121	
660	5	2	2	2	2	2	2	2	R145, R146	3R001021	
661	5	2	2	2	2	2	2	2	R147, R148	3R000241	
662	5	2	2	2	2	2	2	2	R149, R150	3R001201	
663	5	2	2	2	2	2	2	2	R151, R152	3R000881	
664	5	2	2	2	2	2	2	2	R153, R154	3R000941	
665	5	2	2	2	2	2	2	2	R155, R156	3R000901	
666	5	2	2	2	2	2	2	2	R157, R158	3R001281	
667	5	2	2	2	2	2	2	2	R159, R160	3R001041	
668	5	2	2	2	2	2	2	2	R161, R162	3R001091	
669	5	2	2	2	2	2	2	2	R165, R166	3R001121	
670	5	2	2	2	2	2	2	2	R167, R168	3R001521	
671	5	2	2	2	2	2	2	2	R201, R202	3R001171	
672	5	2	2	2	2	2	2	2	R203, R204	3R000981	
673	5	2	2	2	2	2	2	2	R205, R206	3R001101	
674	5	2	2	2	2	2	2	2	R207, R208	3R001081	
675	5	2	2	2	2	2	2	2	R209, R210	3R000621	
676	5	2	2	2	2	2	2	2	R211, R212	3R000841	
677	5	2	2	2	2	2	2	2	R213, R214	3R000941	
678	5	2	2	2	2	2	2	2	R215, R216	3R000921	
679	5	4	4	4	4	4	4	4	R217- R220	3R000721	
680	5	2	2	2	2	2	2	2	R221, R222	3R001021	
681	5	2	2	2	2	2	2	2	R223, R224	3R000721	
682	5	2	2	2	2	2	2	2	R251, R252	3R000731	
683	5	2	2	2	2	2	2	2	R253, R254	3R001121	
684	5	2	2	2	2	2	2	2	R255, R256	3R000741	
685	5	2	2	2	2	2	2	2	R257, R258	3R001201	
686	5	2	2	2	2	2	2	2	R261, R262	3R000801	
687	5	4	4	4	4	4	4	4	R263- R266	3R000721	
688	4	1	1	1	1	1	1	1		3C003340	
689	4	1	1	1	1	1	1	1		3E0150700B	
690	4	1	1	1	1	1	1	1	BN101	3E0138300A	
691	4	1	1	1	1	1	1	1	BN102	3E0142300A	
692	4	1	1	1	1	1	1	1	BN104	3E0138800A	
693	4	2	2	2	2	2	2	2	C002, C003	3C001210	
694	4	1	1	1	1	1	1	1	C004	3C000920	
695	4	1	1	1	1	1	1	1	C005	3C000360	
696	4	2	2	2	2	2	2	2	C006, C007	3C000680	
697	4	1	1	1	1	1	1	1	C008	3C001200	
698	4	1	1	1	1	1	1	1	C009	3C000680	
699	4	1	1	1	1	1	1	1	C010	3C000360	
700	4	1	1	1	1	1	1	1	C011	3C000420	
701	4	1	1	1	1	1	1	1	C012	3C000760	
702	4	1	1	1	1	1	1	1	C013	3C011070	
703	4	1	1	1	1	1	1	1	C014	3C000840	
704	4	1	1	1	1	1	1	1	C015	3C000180	
705	4	3	3	3	3	3	3	3	C016- C018	3C000760	
706	4	1	1	1	1	1	1	1	C019	3C000680	
707	4	4	4	4	4	4	4	4	C020- C023	3C000360	
708	4	1	1	1	1	1	1	1	C030	3C003240	
709	4	1	1	1	1	1	1	1	C031	3C003300	
710	4	1	1	1	1	1	1	1	C032	3C003020	
711	4	2	2	2	2	2	2	2	C033, C034	3C003140	
712	4	3	3	3	3	3	3	3	C035- C037	3C000360	
713	4	1	1	1	1	1	1	1	C038	3C000680	
714	4	2	2	2	2	2	2	2	C101, C102	3C008830	
715	4	2	2	2	2	2	2	2	C103, C104	3C000680	

	LEVEL	Q'TY							REF NO.	PARTS NO.
		JPN	EX/T/C	KOR	EUR-N	EUR-Y	UK	AUS		
716	4	2	2	2	2	2	2	2	C105, C106	3C003360
717	4	2	2	2	2	2	2	2	C107, C108	3C003160
718	4	2	2	2	2	2	2	2	C109, C110	3C000360
719	4	2	2	2	2	2	2	2	C111, C112	3C003420
720	4	2	2	2	2	2	2	2	C113, C114	3C000360
721	4	6	6	6	6	6	6	6	C115- C120	3C000180
722	4	2	2	2	2	2	2	2	C121, C122	3C000160
723	4	2	2	2	2	2	2	2	C123, C124	3C000240
724	4	2	2	2	2	2	2	2	C125, C126	3C010860
725	4	2	2	2	2	2	2	2	C127, C128	3C000180
726	4	2	2	2	2	2	2	2	C129, C130	3C011640
727	4	2	2	2	2	2	2	2	C201, C202	3C010860
728	4	2	2	2	2	2	2	2	C203, C204	3C010840
729	4	2	2	2	2	2	2	2	C205, C206	3C000360
730	4	2	2	2	2	2	2	2	C207, C208	3C003440
731	4	2	2	2	2	2	2	2	C209, C210	3C003280
732	4	2	2	2	2	2	2	2	C211, C212	3C003240
733	4	2	2	2	2	2	2	2	C213, C214	3C003160
734	4	2	2	2	2	2	2	2	C251, C252	3C010860
735	4	2	2	2	2	2	2	2	C253, C254	3C003040
736	4	2	2	2	2	2	2	2	C255, C256	3C000360
737	4	1	1	1	1	1	1	1	CN001	3E001170
738	4	1	1	1	1	1	1	1	CN191	3E010370
739	4	1	1	1	1	1	1	1	CN501	3E010380
740	4	1	1	1	1	1	1	1	CN506	3E010340
741	4	1	1	1	1	1	1	1	CN603	3E010440
742	4	10	10	10	10	10	10	10	D001- D010	3S000031
743	4	2	2	2	2	2	2	2	D023, D024	3S000031
744	4	1	1	1	1	1	1	1	IC001	3S000250
745	4	1	1	1	1	1	1	1	IC002	3S000650
746	4	1	1	1	1	1	1	1	IC101	3S000280
747	4	1	1	1	1	1	1	1	IC102	3S000260
748	4	1	1	1	1	1	1	1	IC103	3S002520
749	4	1	1	1	1	1	1	1	IC104	3S000430
750	4	2	2	2	2	2	2	2	IC105 ,106	3S000810
751	4	1	1	1	1	1	1	1	IC107	3S000260
752	4	1	1	1	1	1	1	1	IC108	3S000280
753	4	1	1	1	1	1	1	1	IC201	3S000260
754	4	1	1	1	1	1	1	1	J101	3E014190
755	4	2	2	2	2	2	2	2	L002, L003	3E003711
756	4	1	1	1	1	1	1	1	L004	3E0042800A
757	4	2	2	2	2	2	2	2	L101, L102	3E003730
758	4	2	2	2	2	2	2	2	L201, L202	3E003740
759	4	2	2	2	2	2	2	2	L203, L204	3E003690
760	4	1	1	1	1	1	1	1	Q001	3S000020
761	4	1	1	1	1	1	1	1	Q002	3S000400
762	4	2	2	2	2	2	2	2	Q003, Q004	3S000020
763	4	3	3	3	3	3	3	3	Q005- Q006	3S000000
764	4	1	1	1	1	1	1	1	Q008	3S000020
765	4	1	1	1	1	1	1	1	Q009	3S000291
766	4	1	1	1	1	1	1	1	Q010	3S000020
767	4	2	2	2	2	2	2	2	Q011, Q012	3S000301
768	4	1	1	1	1	1	1	1	Q013	3S000000
769	4	1	1	1	1	1	1	1	Q014	3S000301
770	4	1	1	1	1	1	1	1	Q015	3S000291
771	4	1	1	1	1	1	1	1	Q016	3S000301
772	4	3	3	3	3	3	3	3	Q017- Q019	3S000000
773	4	1	1	1	1	1	1	1	Q020	3S000301
774	4	4	4	4	4	4	4	4	Q101- Q104	3S000000
775	4	2	2	2	2	2	2	2	Q105, Q106	3S000741
776	4	2	2	2	2	2	2	2	Q107, Q108	3S000000
777	4	2	2	2	2	2	2	2	Q109, Q110	3S000731
778	4	2	2	2	2	2	2	2	Q111, Q112	3S000000
779	4	4	4	4	4	4	4	4	Q201- Q204	3S000000
780	4	2	2	2	2	2	2	2	Q251, Q252	3S000731

CDP & C.DECK, AD-600

	LEVEL	Q'TY							REF NO.	PARTS NO.
		JPN	EX/T/C	KOR	EUR-N	EUR-Y	UK	AUS		
781	4	1	1	1	1	1	1	1	R030	3R004580
782	4	2	2	2	2	2	2	2	R181, R182	3R004530
783	4	2	2	2	2	2	2	2	R291, R292	3R004610
784	4	2	2	2	2	2	2	2	R293, R294	3R004590
785	1	1								3Y0039000A
786	1		1							3Y0039013A
787	1			1						3Y0039037A
788	1				1	1	1			3Y0039040A
789	1							1		3Y0039060A
790	2		1	1	1	1	1	1		D00734000A
791	2			1						3D0005700A
792	2				1	1	1			3D0003800A
793	2	1								3D0039400B
794	2		1	1	1	1	1	1		3D0039500B
795	2	1	1	1	1	1	1	1		3D0047800A
796	2	2	2	2	2	2	2	2		3E000380
797	2	2	2	2	2	2	2	2		3E003660
798	2	1	1	1	1	1	1	1		3E0139300A
799	2	1	1	1	1	1	1	1		3M0003000A
800	1	1								3Y0039100A
801	1		1							3Y0039113A
802	1			1						3Y0039137A
803	1				1					3Y0039140A
804	1					1				3Y0039141A
805	1						1			3Y0039150A
806	1							1		3Y0039160A
807	2	1								3D0039600A
808	2		1							3D0039613C
809	2			1						3D0039637B
810	2				1					3D0039640A
811	2					1				3D0039641A
812	2						1			3D0039650A
813	2							1		3D0039660A
814	2	0	0	0	0	0	0	0		3D0039700A
815	2	0	0	0	0	0	0	0		3D0039800A
816	2	0	0	0	0	0	0	0		3D0040100A
817	2	0	0	0	0	0	0	0		3M0009300A
818	2	0	0	0	0	0	0	0		3M0013000A
819	2		1							3M0026900A
820	2		1							3M0027000B
821	2		1	1	1	1	1	1		3M0027100A
822	2		1	1	1	1	1	1		3M0027200A
823	2		1							3M0027300A
824	2			1						3M0112000A
825	1	1	1	1	1	1		1		3Y0039700A
826	1						1			3Y0039710A
827	2	1	1	1	1	1		1		3M0003200A
828	2						1			3M0015100A
829	2	1	1	1	1	1	1	1		3M0018700B
830	2	1	1	1	1	1	1	1		3M0111600B
831	2	1	1	1	1	1	1	1		3M0111700B
832	2	1	1	1	1	1	1	1		3M0111800A
833	2	0	0	0	0	0	0	0		3M0111900A
834	1	1	1	1	1	1	1	1		3Y0044000A
835	2	1	1	1	1	1	1	1		3D0040100A
836	2	1	1	1	1	1	1	1		3D0050200A

DESCRIPTION
CDP & C.DECK,JPN AD-600
CDP & C.DECK,EXTC AD-600
CDP & C.DECK,KOR AD-600
CDP & C.DECK,EUR-N AD-600
CDP & C.DECK,EUR-Y AD-600
CDP & C.DECK,UK AD-600
CDP & C.DECK,AUS AD-600
COMPLETION,JPN AD-600
COMPLETION,EX/T/C AD-600
COMPLETION,KOR AD-600
COMPLETION,EUR-N AD-600
COMPLETION,EUR-Y AD-600
COMPLETION,UK AD-600
COMPLETION,AUS AD-600
CABINET SEC,JPN AD-600
CABINET SEC,EX/T/C AD-600
CABINET SEC,KOR AD-600
CABINET SEC,EUR AD-600
CABINET SEC,EUR AD-600
CABINET SEC,UK AD-600
CABINET SEC,AUS AD-600
SCREW,BPS M2.6X4
SCREW,BPP M3X8
SCREW,BPP M3X8
SCREW,BPP M3X8
SCREW,BPP M3X8
SCREW,BPP M3X8
SCREW,BPP M3X8
SCREW,BPP M3X8
SCREW,BPP M3X8
SCREW,BPP M3X10
SCREW,J,S M3X6
SCREW,J,S M3X6
SCREW,J,S M3X6
SCREW,J,S M3X6 BLK
SCREW,J P M3*8 BLK
SCREW,BPS M3X8 (BLK)
SCREW,BPB M4X8
SCREW,BPB M3X8 (BLK)
SCREW,BPB M3X8 (BLK)
SCREW,BPB M3X8 (BLK)
SCREW,BPB M3X8 (BLK)
SCREW,BPB M3X8 (BLK)
SCREW,BPB M3X8 (BLK)
SCREW,BPB M3X8 (BLK)
SCREW,BPB M3X8 (BLK)
SCREW,BPB M3X8 (BLK)
SCREW,BPB M3X8 (BLK)
SCREW,BPB M3X8 (BLK)
SCREW,BPB M3X8 (BLK)
SCREW,BPB M3*8 (BLK)
SCREW,BPB M3*8 (BLK)
SCREW,BPA M3X6
SCREW,FPS TITE M3X6
POWER CORD,JPN
POWER CORD,UL/CSA SPEI
POWER CORD,KOR
POWER CORD,EUR
POWER CORD,UK
POWER CORD,AUS
MECH GND WIRE ASSY
FER.CORE B18T 25*12*15
FFC BNCD-P=1.25-K-12-320
TRANS, AD-600
CABLE BAND,100MM DS-8432
CABLE BAND,100MM DS-8432
CABLE BAND,100MM DS-8432

DESCRIPTION
CABLE BAND,100MM DS-8432
BUSHING,#2271
TORSION SPRING,CASE I
CASE,LEAD W-780R
DAMPER,(SD-385)
NUT,VR M9
PLAIN WSHR,VR M9.1
WIRE CLAMP
PLATE,IC AD500
BONNET AD-500
WINDOW,LID AD500
BUTTON,POWER
FOOT ASSY, SD-455
TEAC EMBLEM (GOLD)
PLAIN WASHER,M3 D11.5
PLATE,REFLECT
RTNG RING-C,D7.7-0.8
FRONT PANEL AD-600
DOOR LID AD-600
DOOR CD1 AD-600
DOOR CD2 AD-600
DOOR CD3 AD-600
KNOB MAIN AD-600
KNOB DISC AD-600
KNOB CD OPEN AD-600
KNOB SKIP AD-600
KNOB REC LEVEL AD-600
KNOB VOLUME AD-600
KNOB EJECT AD-600
ROD POWER AD-600
WINDOW FLT AD-600
LENS PITCH CONTRON AD-600
HOLDER REC LEVEL AD-600
CHASSIS BOTTOM AD-600
REAR PANEL JPN AD-600
REAR PANEL EX AD-600
REAR PANEL EUR AD-600
BRACKET PCB A" AD-600"
BRACKET PCB B" AD-600"
BRACKET PCB C" AD-600"
BRACKET PHONE AD-600
BRACKET POWER TRANS AD600
BRACKET POWER S/W AD-600
MECH ASSY,CMAL2Z213A
PLATE HD BLK
MTR MAIN BLK
PCB CONTROL BLK
CLUTCH ASSY BLK
MAIN BELT
ASSY F/W ES-5
ASSY F/W ES-5
ROLLER PINCH BLK R
ROLLER PINCH BLK L
F/R BELT
ASSY F/W FR25A-11
F/W FR25Y-11
CUSHION AD-600
INSUL COVER,A AD-600
INSUL COVER,B AD-600
SHIELD PLATE IC AD-600
CUSHION,R14
DECK ASSEMBLY AD-600
WIRE ASSY,6P CD
TORSION SPRING,EJECT
SCREW,4X1.3S W-780R

DESCRIPTION
HOOK,EJECT A W-780R
BRACKET,EJECT A W-780R
CD DRV ASSEMBLY AD-600
CD MECHA ASSY,MGC-F3000
REINFORCING HARDWARE (S)
SLIDER (LIFT)
REINFOTCING HARDWARE (R)
REINFOTCING HARDWARE(TOP)
REINFOTCING HARDWARE (F)
SHAFT (GEAR-C)
SHAFT (HOLDER GEAR)
SHAFT (HOLDER TRAY)
PULLEY
GEAR (TRAY MOTOR-A)
GEAR (TRAY MOTOR-B)
GEAR (TRAY MOTOR-C)
GEAR (TRAY-A)
GEAR (LIFT MOTOR-A)
ARM (JOINT)
ARM (LOAD SW)
LACK (GEAR)
ARM (TRAY-SUB)
ARM (TRAY-LOCK)
GEAR (LIFT-IDLER)
GEAR (IDLER)
GUIDE (TRAY OUTER-L)
CLAMPER
CAM (LIFT)
HOLDER (LIFT)
HOLDER (TRAY-R)
TRAY (SUB)
ARM (SWITCH CLOSE)
TRAY (MAIN)
CHASSIS (MAIN)
HOLDER (TRAY TOP)
GUIDE (TRAY OUTER)
SLIDER (TRAY-B)
GUIDE (TRAY-L)
GUIDE (TRAY-R)
ARM (TRAY CATCH-L)
ARM (TRAY CATCH-R)
CHASSIS (GUIDE)
GUIDE (TRAY MID)
GUIDE (CAM)
GEAR (TRAY-IDLER)
SLIDER (TRAY-A)
SLIDER (TRAY LOCK)
ARM (SWITCH OPEN)
PULLEY (B)
TRAY (SUB-2)
TRAY (SUB-3)
GEAR (TRAY-FINAL)
HOLDER (GEAR-B)
HOLDER (GEAR-C)
GEAR (SUN)
GEAR (INTERNAL)
GEAR (CARRIER)
GEAR (PLANET)
PULLEY (MOTOR-A)
BELT
TORSION SPRING (CAM LIFT)
EXTENSION SPR (TRAY LOCK)
TORSION SPR (LACK GEAR)
TORSION SPR (HOLDER GEAR)
SHAFT (GEAR-B)

DESCRIPTION
SHAFT (GEAR-A)
SHAFT (PULLEY)
SCREW (TRAY)
SCREW(A2)
SCREW,(SUB-L)
PCB (MAIN)
WIRING HARNESS (A)
WIRING HARNESS (B)
WIRING HARNESS (C)
WIRING HARNESS (D)
WIRING HARNESS (E)
WIRING HARNESS (F)
WIRING HARNESS (G)
WIRING HARNESS (H)
WIRING HARNESS (I)
INSULATOR 37 BLUE
INSULATOR 25 GREEN
TRAVERSE UNIT
PHOTO INT GP1S93
MAGNET (2)
CONNECTOR 15FMN-STK
DC MOTOR MDN4BT3MEA
SWITCH MPU10184MLBO
SWITCH MPU11470MLBO
SWITCH MPU11301MLBO
PHOTO TR, RPT-38PB3F
LED SIR-34ST3F
TAPTITE SCREW 2.6*6
BIND TAPPING SC 2.6*8
BIND TAPPING SC 2.6*6 BL
SEMS SCREW 2*4
TAPPING SCREW 2*3.5
MACHINE SCREW M2*2.5
POLY WS 1.57*4*0.5 CUT
COMPRESSION SPRING(GEAR)
SCREW (GEAR)
BIND TAPTITE SC 2.6*6
RESISTOR 390 OHM
RESISTOR 330 OHM
TAPE
FFC BNCD-P=1.0-K-15-180
FFC SFBNCD-P=1.0-K-16-320
CUSHION, GUARD AD-600
PLATE, FCC GUIDE AD-600
AMP SEC, JPN AD-600
AMP SEC, EX/T/C AD-600
AMP SEC, KOR AD-600
AMP SEC, EUR AD-600
AMP SEC, AUS AD-600
PCBA, GATHER JPN AD-600
PCBA, GATHER EX/T/C AD-600
PCBA, GATHER KOR AD-600
PCBA, GATHER EUR AD-600
PCBA, GATHER AUS AD-600
PCBA, GATHER IA AD-600
PCB, GATHER AD-600
PCB, CONTROL AD-600
PCB, FLD IA AD-600
PCB, FRONT (A) AD-600
PCB, FRONT (B) AD-600
PCB, FRONT (C) AD-600
PCB, DO AD-600
PCB, CONTROL I/O CDA630
PCB, TAPE AD-600
PCB, HP AD-600

DESCRIPTION
PCB,TRANS(P) AD-600
PCB,TRANS (S) AD-600
PCB,P.SW AD-600
PCB,V SELECT AD-600
PCB,REG AD-600
PCBA,CONTROL AD-600
PCBA,CONTROL IA AD-600
PCB,CONTROL AD-600
ZDI,MTZJ30B T-77
ZDI,MTZJ5.1B T-77
DIODE,1SS133 T-77
ZDI,MTZJ5.1B T-77
DIODE,1SS133 T-77
ZDI, MTZJ6.2B T-77
ZDI,MTZJ4.7B T-77
ZDI,MTZJ5.1B T-77
DI,RB721Q-40 T-77
RD, 1/8W 1.5K OHM J 26MM
RD, 1/8W 100 OHM J 26MM
RD, 1/8W 10K OHM J 26MM
RD, 1/8W 15K OHM J 26MM
RD, 1/8W 47K OHM J 26MM
RD, 1/8W 68K OHM J 26MM
RD, 1/8W 47K OHM J 26MM
RD, 1/8W 10K OHM J 26MM
RD, 1/8W 10K OHM J 26MM
RD, 1/8W 3.3K OHM J 26MM
RD, 1/8W 220 OHM J 26MM
RD, 1/8W 6.2K OHM J 26MM
RD, 1/8W 10K OHM J 26MM
RD, 1/8W 10K OHM J 26MM
RD, 1/8W 100K OHM J 26MM
RD, 1/8W 4.7K OHM J 26MM
RD, 1/8W 4.7K OHM J 26MM
RD, 1/4W 100 OHM J 26MM
RD, 1/8W 1.0K OHM J 26MM
RD, 1/8W 4.7K OHM J 26MM
RD, 1/8W 10K OHM J 26MM
JUMPER RES,5MM
RD, 1/8W 10K OHM J 26MM
RD, 1/8W 4.7K OHM J 26MM
RD, 1/8W 15K OHM J 26MM
JUMPER RES,5MM
RD, 1/8W 15K OHM J 26MM
RD, 1/8W 91 OHM J 26MM
RD, 1/4W 10 OHM J 26MM
RD, 1/8W 1.0K OHM J 26MM
RD, 1/8W 5.1K OHM J 26MM
RD, 1/8W 150K OHM J 26MM
RD, 1/8W 4.7K OHM J 26MM
RD, 1/8W 150K OHM J 26MM
RD, 1/8W 4.7K OHM J 26MM
RD, 1/8W 47K OHM J 26MM
RD, 1/8W 10K OHM J 26MM
RD, 1/8W 4.7K OHM J 26MM
RD, 1/8W 10K OHM J 26MM
RD, 1/8W 1.8K OHM J 26MM
RD, 1/8W 33K OHM J 26MM
RD, 1/8W 120K OHM J 26MM
RD, 1/8W 33K OHM J 26MM
RD, 1/8W 10K OHM J 26MM
RD, 1/8W 100K OHM J 26MM
RD, 1/8W 12K OHM J 26MM
RD, 1/8W 3.3K OHM J 26MM
RD, 1/8W 10M OHM J 26MM

DESCRIPTION
RD, 1/8W 4.7K OHM J 26MM
RD, 1/8W 33 OHM J 26MM
RD, 1/8W 10M OHM J 26MM
RD, 1/8W 2.2K OHM J 26MM
RD, 1/8W 10K OHM J 26MM
RD, 1/8W 33K OHM J 26MM
RD, 1/8W 22K OHM J 26MM
RD, 1/8W 10K OHM J 26MM
RD, 1/8W 75K OHM J 26MM
RD, 1/8W 15K OHM J 26MM
RD, 1/8W 7.5K OHM J 26MM
RD, 1/8W 18K OHM J 26MM
RD, 1/8W 7.5K OHM J 26MM
RD, 1/8W 4.7K OHM J 26MM
RD, 1/8W 18K OHM J 26MM
RD, 1/8W 4.7K OHM J 26MM
RD, 1/8W 2.2K OHM J 26MM
RD, 1/8W 12K OHM J 26MM
RD, 1/8W 100K OHM J 26MM
RD, 1/8W 470 OHM J 26MM
RD, 1/8W 4.7K OHM J 26MM
RD, 1/8W 47K OHM J 26MM
RD, 1/8W 100K OHM J 26MM
RD, 1/8W 10K OHM J 26MM
RD, 1/8W 8.2K OHM J 26MM
RD, 1/8W 5.1K OHM J 26MM
RD, 1/8W 47K OHM J 26MM
RD, 1/8W 22K OHM J 26MM
RD, 1/8W 5.1K OHM J 26MM
RD, 1/8W 220 OHM J 26MM
RD, 1/8W 10K OHM J 26MM
RD, 1/8W 36K OHM J 26MM
RD, 1/8W 10K OHM J 26MM
RD, 1/8W 470K OHM J 26MM
RD, 1/8W 2.7K OHM J 26MM
RD, 1/8W 220K OHM J 26MM
RD, 1/8W 10K OHM J 26MM
RD, 1/8W 47K OHM J 26MM
RD, 1/8W 470 OHM J 26MM
JUMPER RES,10MM
RD, 1/8W 100K OHM J 26MM
WIRE ASSY,12P CONTROL
WIRE ASSY,3P REG
NIREA,3PDRU PWR
CE, 63V 220UF M
CE, 50V 220UF M
CE, 50V 4.7UF M
CE, 50V 10UF M
CE, 50V 1.0UF M
CE, 35V 47UF M
CC,YF 50V 0.1UF Z
CC,YF 50V 0.022UF Z
CC,YF 50V 0.1UF Z
CC,YF 50V 0.022UF Z
CE, 50V 4.7UF M
CE, 50V 10UF M
CC,YF 50V 0.047UF Z
CC,F 50V 0.01UF Z
CC,SL 50V 47PF J
CE, 50V 0.1UF M
CE, 35V 47UF M
CC,YF 50V 0.1UF Z
CE, 16V 100UF M
CC,YF 50V 0.1UF Z
CE, 35V 47UF M

DESCRIPTION
CC,YF 50V 0.1UF Z
CE, 35V 47UF M
CC,YF 50V 0.1UF Z
CE, 35V 47UF M
CC,SL 50V 220PF J
CC,YF 50V 0.1UF Z
CC,YF 50V 0.047UF Z
CC,YF 50V 0.1UF Z
CE, 50V 0.47UF M
CQ, 100V 0.010UF J MYLAR
CQ, 100V 4700PF J MYLAR
CQ, 100V 1500PF J MYLAR
CQ, 100V 0.047UF J MYLAR
CC,SL 50V 220PF J
CE, 50V 2.2UF M
CE, 16V 220UF M
CC,YF 50V 0.1UF Z
CC,YF 50V 0.1UF Z
CQ, 100V 0.047UF J MYLAR
CQ, 100V 0.022UF J MYLAR
CC,SL 50V 680PF J
CQ, 100V 2200PF J MYLAR
CE, 35V 47UF M
CQ, 100V 5600PF J MYLAR
CC,SL 50V 680PF J
CQ, 100V 0.022UF J MYLAR
CE, 16V 220UF M
CQ, 100V 0.047UF J MYLAR
CC,F 50V 0.01UF Z
CC,YF 50V 0.1UF Z
CC,F 50V 0.01UF Z
CE, 35V 47UF M
CC,SL 50V 150PF J
CC,SL 50V 680PF J
CE, 50V 4.7UF M
CC,YF 50V 0.047UF Z
CE, 35V 47UF M
CC,YF 50V 0.1UF Z
CE, 16V 100UF M
CE, 35V 22UF M F/5.0
CQ, 100V 0.010UF J MYLAR
CC,CH 50V 33PF J
CC,CH 50V 8PF J
CQ, 100V 1000PF J MYLAR
CQ, 100V 0.022UF J MYLAR
CC,YF 50V 0.1UF Z
CE, 50V 1.0UF M
CC,YF 50V 0.1UF Z
CC,SL 50V 220PF J
CC,B 50V 1000PF K CERAM
CONNECT PLUG B 3B-PH-K-S
CONNECT PLUG B 7B-PH-K-S
CONNECT PLUG 3P B3B-EH-A
CONNECT PLUG B 8B-PH-K-S
CONNECT PLUG B 2B-PH-K-S
CONNECT,12FE-BT-VK-N
CONNECT PLUG B 3B-PH-K-S
CONNECT PLUG B 6B-PH-K-S
CONNECT,15FMM-BTK
CONNECT,16FMM-BTRK
DIODE,1N4003-TR
DIODE,1N4003-TR
TERMINAL,EARTH PLATE B
IC,CXP82224-149Q
IC,CXA2581N

DESCRIPTION
IC,CXD2598Q
IC, KA9258D
IC,NJM4558D
IC,BA6209N
BA7082F
IC,74HCU04AF
IC,74HC00 SOP
COIL,10UH EC24-100K-T2
TR,2SA1015GR
TR,2SC1815GR
TR,DTC124ES TP
TR,2SB1240 TV2Q
TR,DTC124ES TP
TR,DTA124ES TP
TR,DTC124ES TP
TR,2SA1015GR
TR,DTC143TS TP
TR,DTC124ES TP
TR,DTC144ES
TR,DTC124ES TP
TR,2SC1815GR
VR SEMI-FIXED RH0615-4.7K
RD, 1/2W 10 OHM J
VR SEMI-FIXED RH0615-10K
RD,1/4W 4.7 OHM
RESONATOR,CST 10.00MTW
X'TAL 16.9344MHZ
PCBA,FLD AD-600
PCBA,FLD IA AD-600
PCB,FLD IA AD-600
DIODE,1SS133 T-77
RD, 1/8W 820 OHM J 26MM
RD, 1/8W 1.0K OHM J 26MM
RD, 1/8W 1.5K OHM J 26MM
RD, 1/8W 2.7K OHM J 26MM
RD, 1/8W 820 OHM J 26MM
RD, 1/8W 1.0K OHM J 26MM
RD, 1/8W 1.5K OHM J 26MM
RD, 1/8W 2.7K OHM J 26MM
RD, 1/8W 820 OHM J 26MM
RD, 1/8W 1.0K OHM J 26MM
RD, 1/8W 1.5K OHM J 26MM
RD, 1/8W 2.7K OHM J 26MM
RD, 1/8W 4.7K OHM J 26MM
RD, 1/8W 10K OHM J 26MM
RD, 1/8W 820 OHM J 26MM
RD, 1/8W 1.0K OHM J 26MM
RD, 1/8W 1.5K OHM J 26MM
RD, 1/8W 10 OHM J 26MM
RD, 1/8W 220 OHM J 26MM
RC CUSHION DC-D4800
HOLDER FLT AD-600
CUSHION,8X8X11
WIRE ASSY,6P REC VR
CC,SL 50V 100PF J
CE, 50V 10UF M
CC,YF 50V 0.047UF Z
CONNECT PLUG S 3B-PH-K-S
CONNECT PLUG B 4B-PH-K-S
DISPLAY,FL,HNA-11MM33
SW,TACT SKQSAB HMR-187
SW,TACT SKQSAB HMR-187
SW,TACT SKQSAB HMR-187
RMCN RCVR,RPM6938-V4
VAR RES,10KAX2 RK14K12D

DESCRIPTION
PCBA,FRONT (A) AD-600
PCBA,FRONT (A) IA AD-600
PCB,FRONT (A) AD-600
RD, 1/8W 820 OHM J 26MM
RD, 1/8W 1.0K OHM J 26MM
RD, 1/8W 1.5K OHM J 26MM
RD, 1/8W 2.7K OHM J 26MM
RD, 1/8W 4.7K OHM J 26MM
RD, 1/8W 22K OHM J 26MM
RD, 1/8W 750 OHM J 26MM
SW,TACT SKQSAB HMR-187
WIRE ASSY,3P SK1P
WIRE ASSY,8P PITCH CON
LED HOLDER LED3-4
VAR REG,5KB RK11K113 CC
VAR REG,5KB RK11K113 CC
LED,LSE2040 ORG
PCBA,FRONT (B) AD-600
PCBA,FRONT (B) IA AD-600
PCB,FRONT (B) AD-600
DIODE,1SS133 T-77
RD, 1/8W 4.7K OHM J 26MM
JUMPER RES,5MM
WIRE ASSY,4P SLIDE SW
WIRE ASSY,2P DOLBY SW
SW,SLIDE TKR-0022/473
SW,SLIDE TKR-0022/473
SW,SLIDE TKR-0023/474
PCBA,FRONT (C) AD-600
PCBA,FRONT (C) IA AD-600
PCB,FRONT (C) AD-600
RD, 1/8W 4.7K OHM J 26MM
RD, 1/8W 10K OHM J 26MM
SW,TACT SKQSAB HMR-187
WIRE ASSY,2P OPEN SW
PCBA,DO AD-600
PCBA,DO IA AD-600
PCB,DO AD-600
WIRE ASSY,3P DO
IC,GP1F32T
PCBA,HP AD-600
PCBA,HP IA AD-600
PCB,HP AD-600
DIODE,1SS133 T-77
RD, 1/8W 2.7K OHM J 26MM
RD, 1/8W 4.7K OHM J 26MM
RD, 1/8W 33 OHM J 26MM
JUMPER RES,5MM
WIRE ASSY,5P HP
CE, 25V 100UF M
CC,YF 50V 0.047UF Z
CE, 50V 10UF M
CC,SL 50V 100PF J
TERMINAL,EARTH PLATE B
IC,BA4560
JACK,JY-6313-01-030GD
COIL,100UH EC24-101K-T2
RD, 1/4W 120 OHM STRA
VAR REG,50KAX2 RK09K12A
PCBA,TRANS(P) JPN AD-600
PCBA,TRANS(P) KOR AD-600
PCBA,TRANS(P) EUR AD-600
PCBA,TRANS(P) AUS AD-600
PIN,TERMINAL LAPPING 2P
COIL,1MH/1.5A FKOB160MH16

DESCRIPTION
PCB,TRANS(P) AD-600
JUMPER RES,10MM
JUMPER RES,10MM
JUMPER RES,10MM
JUMPER RES,10MM
JUMPER RES,10MM
PCBA,TRANS(S) AD-600
WIRE ASSY,5P 13V
WIRE ASSY,3P FL
PCB,TRANS (S) AD-600
PCBA,P.SW AD-600
SW, POWER SDDL1-A2-F-1
S.KILLER,CS12-F2GA472MYAS
WIRE #22 UL1672 BRN 200MM
PCB,P.SW AD-600
PCBA,REG AD-600
CE, 50V 1.0UF M
CONNECT PLUG 3P S3B-EH-A
PCB,REG AD-600
IC,NJM7812FA
PCBA,TAPE AD-600
PCBA,TAPE IA AD-600
PCB,TAPE AD-600
ZDI,MTZJ4.3B T-77
DIODE,1SS133 T-77
ZDI,MTZJ3.0B T-77
DIODE,1SS133 T-77
ZDI, MTZJ6.2B T-77
DIODE,1SS133 T-77
RD, 1/8W 470 OHM J 26MM
RD, 1/8W 560 OHM J 26MM
RD, 1/8W 100 OHM J 26MM
RD, 1/8W 3.3K OHM J 26MM
RD, 1/8W 2.7K OHM J 26MM
RD, 1/8W 2.2K OHM J 26MM
RD, 1/8W 22K OHM J 26MM
RD, 1/8W 100K OHM J 26MM
RD, 1/8W 1.0K OHM J 26MM
RD, 1/8W 470 OHM J 26MM
RD, 1/8W 10K OHM J 26MM
RD, 1/8W 15K OHM J 26MM
RD, 1/8W 330 OHM J 26MM
RD, 1/8W 3.3K OHM J 26MM
RD, 1/8W 4.7 OHM J 26MM
RD, 1/8W 68K OHM J 26MM
RD, 1/8W 4.7K OHM J 26MM
RD, 1/8W 1.0K OHM J 26MM
RD, 1/8W 47K OHM J 26MM
RD, 1/8W 4.7K OHM J 26MM
RD, 1/8W 15K OHM J 26MM
RD, 1/8W 47K OHM J 26MM
RD, 1/8W 10K OHM J 26MM
RD, 1/8W 47K OHM J 26MM
RD, 1/8W 100 OHM J 26MM
JUMPER RES,5MM
RD, 1/8W 680 OHM J 26MM
RD, 1/8W 1.0K OHM J 26MM
RD, 1/8W 100K OHM J 26MM
RD, 1/8W 47 OHM J 26MM
RD, 1/8W 91K OHM J 26MM
RD, 1/8W 4.7K OHM J 26MM
RD, 1/8W 1.0K OHM J 26MM
RD, 1/8W 750 OHM J 26MM
RD, 1/8W 1.0K OHM J 26MM
RD, 1/8W 3.3K OHM J 26MM

DESCRIPTION
RD, 1/8W 2.2K OHM J 26MM
RD, 1/8W 100K OHM J 26MM
RD, 1/8W 10K OHM J 26MM
RD, 1/8W 18K OHM J 26MM
RD, 1/8W 5.6K OHM J 26MM
RD, 1/8W 12K OHM J 26MM
RD, 1/8W 43K OHM J 26MM
RD, 1/8W 2.0K OHM J 26MM
RD, 1/8W 47K OHM J 26MM
RD, 1/8W 18K OHM J 26MM
RD, 1/8W 10 OHM J 26MM
RD, 1/8W 100K OHM J 26MM
RD, 1/8W 4.7K OHM J 26MM
RD, 1/8W 8.2K OHM J 26MM
RD, 1/8W 5.6K OHM J 26MM
RD, 1/8W 220K OHM J 26MM
RD, 1/8W 22K OHM J 26MM
RD, 1/8W 36K OHM J 26MM
RD, 1/8W 47K OHM J 26MM
RD, 1/8W 2.2M OHM J 26MM
RD, 1/8W 75K OHM J 26MM
RD, 1/8W 12K OHM J 26MM
RD, 1/8W 39K OHM J 26MM
RD, 1/8W 33K OHM J 26MM
RD, 1/8W 390 OHM J 26MM
RD, 1/8W 3.3K OHM J 26MM
RD, 1/8W 8.2K OHM J 26MM
RD, 1/8W 6.8K OHM J 26MM
RD, 1/8W 1.0K OHM J 26MM
RD, 1/8W 18K OHM J 26MM
RD, 1/8W 1.0K OHM J 26MM
RD, 1/8W 1.1K OHM J 26MM
RD, 1/8W 47K OHM J 26MM
RD, 1/8W 1.2K OHM J 26MM
RD, 1/8W 100K OHM J 26MM
RD, 1/8W 2.2K OHM J 26MM
RD, 1/8W 1.0K OHM J 26MM
CQ, 100V 0.022UF J MYLAR
WIRE,#26 UL1007 ORG 100MM
WIRE ASSY,7P CTL POWER
WIRE ASSY,3P DAC
WIRE ASSY,6P+2P HEAD
CE, 25V 3300UF M
CE, 16V 470UF M
CE, 50V 10UF M
CE, 16V 100UF M
CE, 16V 3300UF M
CE, 16V 100UF M
CE, 50V 10UF M
CE, 35V 22UF M F/5.0
CE, 16V 220UF M
CC,B 50V 1000PF K
CE, 16V 330UF M F/5.0
CE, 50V 1.0UF M
CE, 16V 220UF M
CE, 16V 100UF M
CE, 50V 10UF M
CQ, 100V 8200PF J MYLAR
CQ, 100V 0.015UF J MYLAR
CQ, 100V 1000PF J MYLAR
CQ, 100V 3300PF J MYLAR
CE, 50V 10UF M
CE, 16V 100UF M
CQ, 100V 680PF J PL
CE, 16V 100UF M

DESCRIPTION
CQ, 100V 0.027UF J MYLAR
CQ, 100V 3900PF J MYLAR
CE, 50V 10UF M
CQ, 100V 0.047UF J MYLAR
CE, 50V 10UF M
CE, 50V 1.0UF M
CE, 63V 0.68UF M F/5.0
CE, 50V 3.3UF M
CC,SL 50V 220PF J
CE, 50V 1.0UF M
CC,YF 50V 0.1UF Z
CC,SL 50V 220PF J
CC,SL 50V 150PF J
CE, 50V 10UF M
CQ, 100V 0.056UF J MYLAR
CQ, 100V 0.012UF J MYLAR
CQ, 100V 8200PF J MYLAR
CQ, 100V 3900PF J MYLAR
CC,SL 50V 220PF J
CQ, 100V 1200PF J MYLAR
CE, 50V 10UF M
CONNECT PLUG 5P B5B-EH-A
CONNECT PLUG B 5B-PH-K-S
CONNECT PLUG B 6B-PH-K-S
CONNECT PLUG B 2B-PH-K-S
CONNECT PLUG B12B-PH-K-S
DIODE,1N4003-TR
DIODE,1N4003-TR
IC,NJM317F
IC,NJM7805FA
IC,UPC4570C
IC,NJM4558D
IC,KA2271B
IC,BU4066BC
IC,TC4053BP
IC,NJM4558D
IC,UPC4570C
IC,NJM4558D
JACK,RJ-1074B-09-0320A
COIL,10UH EC24-100K-T2
TRANS,BIAS OSC 85KHZ
FILTER,MPX LPF FXD2
FILTER,BIAS TRAP 85KHZ
COIL,#7159 8.2MH
TR,2SA1015GR
TRANSISTOR,2SB1015Y
TR,2SA1015GR
TR,2SC1815GR
TR,2SA1015GR
TR,DTC124ES TP
TR,2SA1015GR
TR,DTA124ES TP
TR,2SC1815GR
TR,DTA124ES TP
TR,DTC124ES TP
TR,DTA124ES TP
TR,2SC1815GR
TR,DTA124ES TP
TR,2SC1815GR
TR,DTC143TS TP
TR,2SC1815GR
TR,2SD2144S TP
TR,2SC1815GR
TR,2SC1815GR
TR,2SD2144S TP

DESCRIPTION
VR SEMI-FIXED RH0615-4.7K
VR SEMI-FIXED RH0615-100
VR SEMI-FIXED RH0615-47K
VR SEMI-FIXED RH0615-10K
ACCESS SEC,JPN AD-600
ACCESS SEC,EX/T/C AD-600
ACCESS SEC,KOR AD-600
ACCESS SEC,EUR AD-600
ACCESS SEC,AUS AD-600
SHEET,COPY-PROHIBIT
SHEET, FOR KOREA
ADDRESS LIST
OWN.MNL,(JPN) AD-600
OWN.MNL,(E/F/G/I/S)AD-600
SHEET,1 AD-600
PIN CORD
BATTERY, UM-3(2P X ED)
REMOTE CONTT,UNIT RC-778
POLTHN BAG,(MANUAL)
SEAL SEC,JPN AD-600
SEAL SEC,EX/T/C AD-600
SEAL SEC,KOR AD-600
SEAL SEC,EUR-N AD-600
SEAL SEC,EUR-Y AD-600
SEAL SEC,UK AD-600
SEAL SEC,AUS AD-600
DWG,NAMEPLATE JPN AD600
DWG,NAMEPLATE EXTC AD600
DWG,NAMEPLATE KOR AD600
DWG,NAMEPLATE EUR-N AD600
DWG,NAMEPLATE EUR-Y AD600
DWG,NAMEPLATE UK AD600
DWG,NAMEPLATE AUS AD600
DWG,PARTS NAME AD600
DWG,OUTSIDE SPEC AD-600
DWG,SEAL STICK AD-600
NAME PLATE,TEAC
LABEL,BARCODE OUTER
LABEL, FCC
LABEL,IC-B(CLASS B)
LABEL,CLASS1 LASER PRODCT
LABEL, IEC LASER CAUTION
LABEL,FDA CERTIFICATION
LABEL,TYPE APPROVAL AD600
PACKING SEC,OTHERS AD-600
PACKING SEC,UK AD-600
POLTHN BAG,(AC CORD)
POLTHN BAG,(AC CORD UK)
POLTHN BAG,(DECK) W-780R
CUSHION,L AD-600
CUSHION,R AD-600
CARTON BOX INNER AD-600
CARTON BOX OUTER AD-600
DOC & JIG SEC AD-600
DWG,SEAL STICK AD-600
PRODUCT SPEC AD-600